

heartland LINK

A publication of East-Central Iowa Rural Electric Cooperative

WHAT IT MEANS TO BE ECI REC STRONG

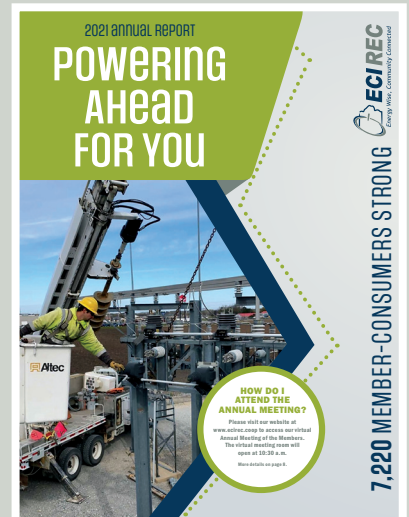


Staff photo credit: Matt Pociask, IAEC

ANNUAL REPORT

Interior insert

A review of the Cooperative's 2021 financials and activities.



FEES UPDATE

Inside back cover

ECI REC announces changes to charges and fees.

SCHOLARSHIP WINNERS

Back cover

East-Central Iowa REC is proud to announce we have awarded \$1,000 scholarships to 12 graduating seniors who plan to further their education in a diverse range of programs.

Congratulations to these deserving students!



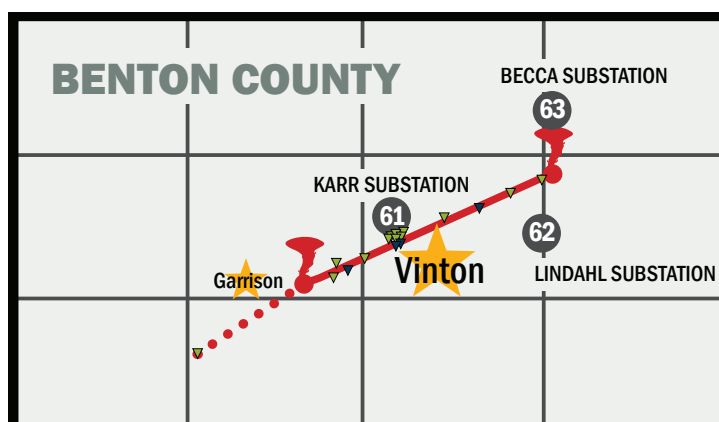
MESSAGE FROM THE CEO: WHAT IT MEANS TO BE ECI REC STRONG

Storm photo credits: Lisa Franck

Photo above: The interior view of the warehouse building at Vinton. Front page, background photo: The exterior of the operations building at Vinton. Front page, foreground photo: The ECI REC team took time out for a group photo during a safety meeting where post-tornado repairs were the main topic. Rebuilding is underway and will take most of the summer.



CEO TERESA FLOYD



March 5, 2022 Tornado Stats

Time: 7:10 p.m. - 7:26 p.m.

Rating: EF1 (green markers);
EF0 (blue markers)

Est. Peak Winds: 110 mph

Path Length: 14 miles

Max. Width: 400 yards

ON MARCH 5, ECI REC's Vinton Operations Center sustained damage from an EF1 tornado that passed through Benton County. The damage was discovered when a line crew arrived at the shop to respond to a power outage. Thankfully, there were no occupants in the building at the time of the storm, though there was significant damage to the overhead doors, roof, and side walls of the facility. Our main fleet of trucks was spared, and crews were able to safely remove them from the building. All outages were restored by 10:00 p.m.

ECI REC continued to function as normal after the discovery of the damage. We implemented our emergency response plan, and employees worked to clear and secure the area. Skid steers, loaders, and other equipment did much of the heavy lifting, while team members walked the grounds, picking up smaller debris. Personnel also worked to secure the grounds and any inventory and materials that remained unsheltered.

In the past month and a half, ECI REC has worked with structural engineers, contractors, our insurance company, and our assigned insurance adjuster to acquire critical information to finalize the claim for damages from the tornado. We hope that by the time this publication is circulated, our contractor will have gotten the green light to move forward and that rebuilding will be underway.

The March tornado demonstrates a truth we all know: Disasters can strike anytime. It is ECI REC's business, and our commitment to our membership, to be as ready as possible. It's important to learn from every crisis we face and update our response plan accordingly.

I encourage our members to do the same. Take action and prepare your families, homes, and vehicles for severe weather and other crises. Remember: When disaster strikes, the time to prepare has passed. We all need to do our part to prepare for whatever might cripple our

day-to-day lives. Prepare today and stay safe out there!

A lot has happened in the past few years—a lingering pandemic, the 2020 derecho, and now this EF1 tornado. I could not be prouder of the strength and integrity shown by ECI REC's 34 employees. Our team has been through trying times unlike anything we have ever seen before. I've witnessed firsthand their strength, camaraderie, and loyalty. I am humbled by how this group rises to the occasion and prevails with positivity, no matter the challenge.

"We Remain ECI REC Strong" is not a cliché—it is truly how we are. We are all so grateful no one was hurt in the March tornado; structures can be rebuilt, but people cannot. As CEO, I am blessed—as is our membership—to have such a dedicated group of employees working for the good of the Cooperative and the 7,220 members we serve. We will get through this latest challenge! 🙌

2021 annual REPORT

POWERING AHEAD FOR YOU



7,220 MEMBER-CONSUMERS STRONG

HOW DO I ATTEND THE ANNUAL MEETING?

Please visit our website at
www.ecirec.coop to access our virtual
Annual Meeting of the Members.
The virtual meeting room will
open at 10:30 a.m.

More details on page 8.



FINANCIALS

STATEMENT OF REVENUE AND EXPENSE

REVENUE	2021	2020
Operating Revenue & Patronage Capital	\$21,620,805	\$21,410,155
EXPENSE		
Purchased Power	\$12,009,951	\$11,973,528
Distribution Expenses - Operations	\$2,116,165	\$2,010,855
Distribution Expenses - Maintenance	\$634,864	\$598,222
Customer Accounts Expense	\$405,742	\$422,412
Customer Service & Informational Expense	\$394,476	\$367,033
Administrative & General Expense	\$1,235,671	\$1,326,582
Depreciation	\$2,486,997	\$2,443,550
Taxes - Property & Other	\$21,579	\$21,428
Interest on Long-Term Debt	\$1,355,605	\$1,343,172
Other Deductions & Interest Expense	\$62,240	\$50,282
TOTAL EXPENSE	\$20,723,290	\$20,557,064
Operating Margins	\$897,517	\$853,091
Non-Operating Margins	\$64,035	\$49,307
Generation & Transmission Capital Credits	\$621,715	\$1,007,783
Other Capital Credits & Patronage Dividends	\$242,473	\$233,798
Total Operating & Non-Operating Margins	\$1,825,740	\$2,143,979

BALANCE SHEET

ASSETS	2021	2020
Current Assets & Other Debits	\$15,133,672	\$14,984,674
Fixed Assets (Net Utility Plant)	\$63,735,561	\$62,251,036
Total Assets & Other Debits	\$78,869,233	\$77,235,710
LIABILITIES		
Total Current & Accrued Liabilities	\$4,380,666	\$4,275,991
Total Fixed Long-Term Debt & Deferred Credits	\$35,947,691	\$35,603,332
Total Margins & Equities	\$38,540,876	\$37,356,387
Total Liabilities & Other Credits	\$78,869,233	\$77,235,710

COMPARATIVE OPERATING STATISTICS

Miles of Line Energized	2,291	2,286
New Services Connected	136	113
Total Services in Place	9,756	9,677
kWhs Purchased from CIPCO	221,551,723	215,455,719
Cost Power Purchased	\$11,993,282	\$11,957,503
Percent Line Loss	4.64%	4.71%

OPERATING REVENUE	\$21,578,890	\$21,385,016
Average kWhs Used per Month per Consumer	2,038	1,998
Average Monthly Bill	\$198.46	\$198.30
Average Cost per kWh to Consumer	\$0.0974	\$0.0993

LOAN FUNDS

CFC	\$34,654,677	\$34,264,811
Other	\$775,126	\$823,529
Total Loan Funds	\$35,429,803	\$35,088,340

Consumer accounts, service, and information
4% Interest
6%

2021 REC DOLLARS AT WORK FOR YOU



2021 President & CEO Message POWERING AHEAD FOR YOU



TERESA FLOYD,
CEO



STEVE RAU,
President

OUR COOPERATIVE functions most effectively with committed and informed leadership. That's why your Board of Directors is democratically elected from the membership to represent your interests and provide long-term vision and direction. Your Board of Directors takes its fiduciary responsibilities very seriously and does a fantastic job guiding how ECI REC's money and assets are used to fulfill our mission. Your Board does it all in ways that protect ECI REC and the interests of all our members.

Last year kicked off our five-year, \$22.4 million Construction Work Plan (2021-2025). In addition to completing damage repairs from the 2020

derecho, the 2021 Construction Work Plan earmarked a \$4.5 million investment in line replacement. We rebuilt 21.7 of the planned 22.3 miles of overhead line, as well as 16.1 of the planned 18 miles of underground distribution cable. Our crews installed 136 new services, which included housing developments in the Urbana, Vinton, and Independence areas. Turn to page 6 for a cost breakdown of these items.

Cybersecurity is another top priority for your Cooperative. In May 2021, the ECI REC management team underwent data security training. An RC3 (Rural Cooperative Cybersecurity Capabilities) tabletop exercise was also performed to test ECI REC's cybersecurity posture.

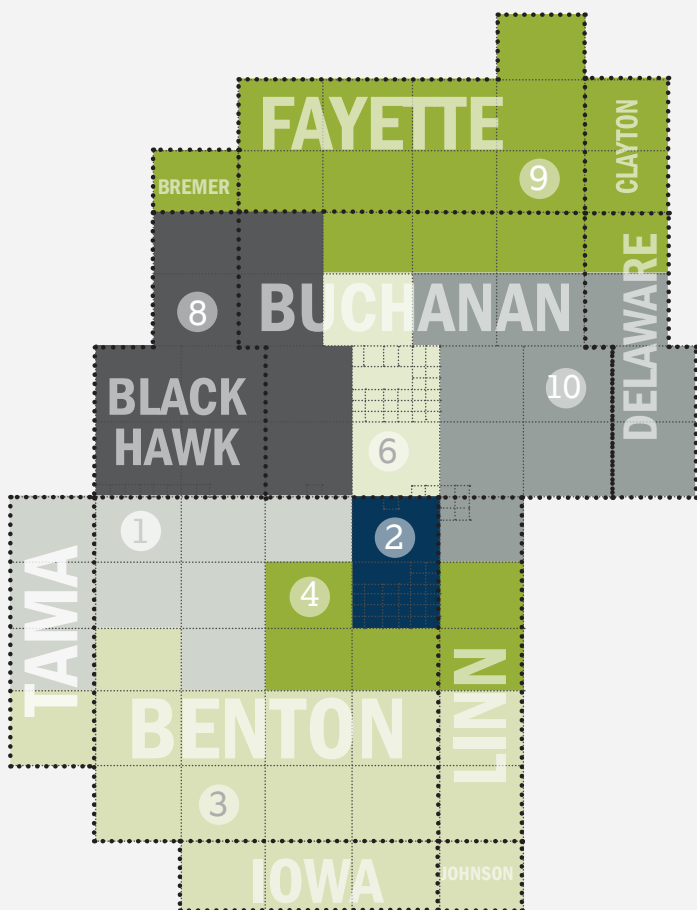
Your Cooperative has been very fortunate to be able to retire deferred patronage for 22 of the past 25 years. This past year was no exception. In June 2021, current members who received electric service from ECI REC in 2006 and/or 2015 saw a line item on their bill called "deferred patronage dividends." The amount of this line item was based on how much the member paid ECI REC for electricity during those years.

In June 2021, a Cooperative-wide, three-day strategic planning initiative took place, as approved by the Board of Directors. There were two employee sessions in addition to the Board and management session. These sessions were facilitated by professionals familiar with the industry.

Following the sessions, it was decided that over the next two to three years, ECI REC will work on a plan that prioritizes seven strategic goals and objectives:

- » Building member trust through modern options and outreach
- » Monitoring and improving technology health
- » Improving safety culture
- » Investing in infrastructure to enhance service reliability
- » Ensuring reliable and affordable power supply
- » Maximizing return on employee investment
- » Promoting financial strength and stability

YOUR DISTRICT MAP & BOARD OF DIRECTORS



Jeff Elliott
Vice President
Director since 1990
Board District 1



Julie Kester
Assistant Secretary/
Treasurer
Director since 2019
Board District 2



Brian McNulty
Director
since 2021
Board District 3



Gary McKenna
Director since 2016
Board District 4



Don Shonka
Director since 2006
Board District 6



Nick Donlea
Director since 2018
Board District 8



Steve Rau
President
Director since 2005
Board District 9



Ryan Kress
Secretary/Treasurer
Director since 2009
Board District 10



The additional power cost prompted by last February's polar vortex pushed our power provider, Central Iowa Power Cooperative (CIPCO), to increase our rates 1.5 mills/kWh. This increase remains in effect in 2022. So far, ECI REC has been able to absorb this increase through the Energy Cost Adjustment (ECA) and maintain our current rates.

We continue to keep our members informed through several channels, including the *Heartland Link*, e-newsletters, Facebook, ecirec.coop, bill inserts, and newspaper ads. An informed and educated membership is in our best interest as a locally owned cooperative!

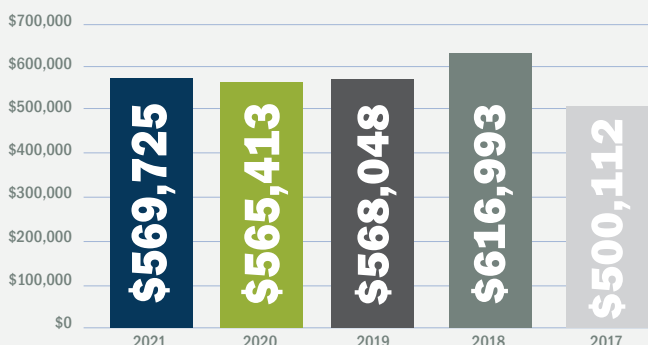
In 2022, our Annual Meeting of the Members will again be held virtually. Members will have the option to cast their ballot online or via mail. Like last year, there will be a longer voting window. For more details on voting and attending the June 16 meeting, see page 8 of the Annual Report.

East-Central Iowa Rural Electric Cooperative's goal will always be the same: providing our members with safe, reliable, and environmentally friendly electricity. We all know there is a cost to fulfilling these goals and remaining progressive. No matter what the future brings, ECI REC will remain dedicated to putting our membership first and keeping your lights on.

5-Year Patronage History

RETURNING YOUR INVESTMENT

Since ECI REC is a nonprofit organization, you pay for electricity at cost. Any margins left over at the end of the year, after all expenses are covered, are allocated to you by your Board of Directors in the form of patronage dividends!



KEEPING THE LIGHTS ON

- » A 2021–2025 Work Plan has been approved by the ECI REC Board of Directors. It is estimated to cost \$22,459,437. Our investment will be divided approximately equally—nearly \$4.5 million per year—over each year of the Work Plan. We will be focusing on system improvements, including:
 - » 180 overhead and underground replacement projects totaling 290 miles, estimated to cost \$14 million
 - » Approximately \$2.5 million in miscellaneous pole and conductor replacements
 - » \$150,000 in security light installations and replacements
- » In 2021, our crews installed 136 new services, which included housing developments in the Urbana, Vinton, and Independence areas.
- » In late April, line crews finished replacing the low-side switch at the Sumner substation. To keep up with future demand, the old 600-amp switch was updated to a 1,200-amp switch. Crews also replaced the three SCADA (supervisory control and data acquisition) tie switches that were damaged by the 2020 derecho.
- » Also in April, Central Iowa Power Cooperative (CIPCO), Clēnera LLC, and RES (Renewable Energy Systems), cut the ribbon at Wapello Solar LLC in southeastern Iowa. CIPCO—ECI REC’s power supplier—has a purchase power agreement (PPA) to purchase 100% of the power from Wapello Solar for 25 years.
- » In July, Operations Assistant Teresa Schremser announced her retirement. Teresa served ECI REC’s members for over 43 years.

ENERGY WISE

- » In January, ECI REC released the 2021 details for our extensive energy efficiency rebate programs, which target residential, agricultural, and commercial members.
- » ECI REC continues to encourage members to consider switching from gas-powered tools and appliances to electric. Many consumers are making the switch because electricity is a cheaper, greener, and smarter way to meet energy needs. This trend is called “beneficial electrification.”

COOPERATIVE DIFFERENCE

- » Allen Albers retired from the ECI REC Board of Directors after 35 years of dedicated service. Brian McNulty was appointed to fill the vacant seat for District #3.
- » At its May meeting, the Board of Directors approved the retirement of \$569,725—100% (\$469,725) of 2006 margins and 12.35% (\$100,000) of 2015 margins—to members of the Cooperative.
- » At the 26th Annual Meeting of the Members, Donald Shonka (District #6), Nick Donlea (District #8), and Ryan Kress (District #10) were re-elected to serve another three-year term on the Board of Directors.
- » Director Julie Kester earned her Credentialed Cooperative Director Certificate (CCD). This certificate is an NRECA curriculum consisting of five core courses that provide cooperative directors with essential knowledge and skills. The certificate is earned by attending all five required courses and successfully completing a learning assessment for each.

SAFETY

- » At the May safety meeting, the ECI REC team completed Mayday procedures, bucket rescue, and climbing competency training.
- » All ECI REC lineworkers passed their annual pole-top rescue course. The timed exercises ensure each lineworker can safely secure and lower an injured or stranded teammate manually with a rope or by lowering the teammate using the truck bucket. Lineworkers also underwent an annual CPR and first-aid review.
- » At the IAEC Annual Meeting in December, ECI REC was congratulated for completing the Rural Electric Safety Achievement Program (RESAP) in 2021. RESAP is a national safety program that electric cooperatives utilize as a framework to improve safety performance and culture.

LOOKING OUT FOR YOU

- » The Iowa Association of Electric Cooperatives (IAEC) conducted its 2021 Annual Meeting at the Sheraton West Des Moines Conference Center on December 2 and 3. During the business meeting, three new Directors were elected to the IAEC Board. The Board also thanked the retiring Directors for their years of service, including ECI REC’s Don Shonka.

COMMUNITY CONNECTED

- » ECI REC awarded \$1,000 scholarships to 12 graduating seniors.
- » In 2021, ECI REC gave \$65,740 to 35 causes, including \$14,650 to local or county economic development.
- » Seventy-two members donated \$7,953 to our RECare program, which assists low-income members in paying for heating bills and winterizing their homes.



COOPERATIVE PRINCIPLES

1. Open and Voluntary Membership
2. Democratic Member Control
3. Members’ Economic Participation
4. Autonomy and Independence
5. Education, Training, and Information
6. Cooperation Among Cooperatives
7. Concern for Community

ECI REC STAFF



Teresa, 30 years
CEO



Mike, 24 years
Inventory/Maintenance
Technician



Adam, 22 years
Manager of Member Service



Doug, 24 years
SCADA Technician



Cole, 6 years
Lineworker



Bryce, 5 years
Lineworker



Holly, 15 years
Member Service
Representative



Braxton, 5 years
Lineworker



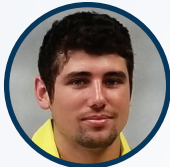
Molly, 21 years
Member Service
Representative



Josh, 4 years
Lineworker



Robert, 10 years
Information Services
Technician



Colton, 4 years
Lineworker



Ben, 17 years
Lineworker



Tanya, 1 year
Member Service
Representative



Lisa, 20 years
Manager of
Communications



Nathan, 15 years
Information Services
Manager



Jared, 10 years
Lineworker



Dave, 27 years
Engineering Design
Technician



Pat, 32 years
System Controller



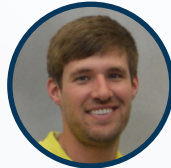
Trent, 3 months
Apprentice Lineworker



Scott, 8 years
Engineering Technician



Robin, 11 years
Cost Accounting Clerk



Dane, 8 years
Engineering Design
Technician



Kelly, 23 years
Member Service
Supervisor



Scott, 10 years
Inventory/Maintenance
Technician



Brian, 23 years
Line Foreman



Travis, 19 years
Lineworker



Tom, 31 years
Operations Manager



Jennifer, 26 years
Manager of
Finance



Teresa, 43 years
Retired



Katie, 3 years
Human Resource
Director



John, 28 years
Member Service
Technician



Kevin, 26 years
Line Foreman



Colton, 4 years
Lineworker

SCENES FROM 2021

2021 Work Plan Improvements Budget

New services construction: **\$131,000**

40.8 miles of line replacement: **\$2,563,225**

Substation upgrades: **\$100,000**

New transformers, meters, & special equipment: **\$335,200**

Service upgrades: **\$146,750**

Sectionalizing equipment (such as breakers & fuses): **\$5,000**

Pole, equipment, & conductor replacements: **\$1,112,500**

Security lights: **\$28,500**

Technology: **\$54,000**

Empowering Energy Savings

\$176,679

in energy efficiency rebates to ECI REC members

\$3,247
agricultural rebates



\$156,272
residential rebates

\$17,160
commercial rebates



777,120 kWh

energy saved by ECI REC members through energy efficiency rebates



INVESTED IN EFFICIENCY

\$0.00092691
per kWh

of 2021 revenue invested in energy efficiency programs

ECI REC IS AMONG IOWA'S

LOWEST RATES

for cooperative residential electricity.

\$6.48

The average our members spend per day on electricity.



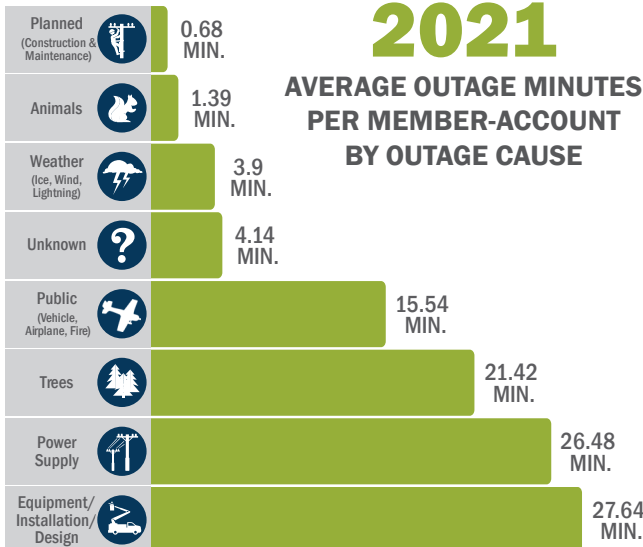
2021 NOTABLE NUMBERS



11,337
AMI meters

AT WORK SERVING

9,117
member-accounts



Helping Member Families in Need

72
members gave
\$7,953



CARE with RECare

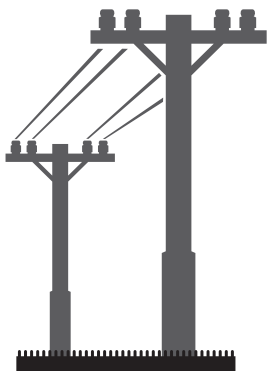


PULLING THE PLUG

Members earned \$10,946 for recycling inefficient working appliances

37.8 MILES
of overhead and underground line replaced

\$2.2 million
invested in line replacements



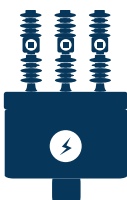
\$65,740 donated to **35** causes

\$12,000
(via \$1,000 scholarships)
to 12 graduating seniors

\$53,740
to various community causes and organizations



ECI REC owns and maintains
24 substations



Average
cost per kWh



\$0.0053
DECREASE
over the past
10 YEARS

2021
Facebook Fans



85 **746**
NEW FANS TOTAL FANS BY YEAR-END



3,162+
REGISTERED SMART HUB USERS

Members Support Renewable
Energy Production in Iowa
76 members > \$4.00 per month



VIRTUAL

ANNUAL MEETING OF THE MEMBERS

HOW DO I VOTE?

On May 16, ballots will be mailed and online voting will open. All votes—online and mail-in—MUST be received by June 13.

- 1** MAIL - A ballot was mailed to every member with a self-addressed and stamped return envelope.*
- 2** SMART HUB - Log in to SmartHub at <https://ecirec.smarthub.coop> and click VOTE NOW. Please note: SmartHub voting must be done in a web browser, not the SmartHub mobile app.
- 3** ONLINE - Click the blue VOTE NOW button located on the home page at www.ecirec.coop. Enter your voter number and election passcode, which were listed at the bottom of your mailed ballot. Follow online voting instructions.

*ECI REC partnered with Diamond/OSG to administer the 2022 Annual Meeting mailing and ballot validation processes. They will tabulate all the ballots, both paper and online.

HOW DO I attend?

Visit www.ecirec.coop and look for the yellow button at the top of the home page, which will take you to the Annual Meeting of the Members page. Look for a green **JOIN NOW** button. The virtual meeting room will open at 10:30 a.m.

Phone: 319-443-4343 | Toll free: 877-850-4343 | Fax: 319-443-4359
Email: ecirec@ecirec.coop | Website: ecirec.coop | Facebook: www.facebook.com/eastcentraliowarec



OUR MISSION

To demonstrate the advantages of the cooperative business model



OUR VISION

To make a difference in the lives of those we serve

meeting agenda

Thursday, June 16, 2022

10:30 a.m. - Login opens

11:00 a.m. - Business meeting begins

Call to Order

Invocation

Introduction of Directors
Steve Rau, President

Reading of Affidavit of Mailing of Notice of Annual Meeting
Ryan Kress, Secretary/Treasurer

Approval of Agenda
Ryan Kress, Secretary/Treasurer

Minutes of Last Annual Meeting
Ryan Kress, Secretary/Treasurer

Introduction of Attorney
Steve Rau, President

Reading of the Nominating Committee Minutes and Election Results
Julie Pulkrabek, Attorney

Adjournment of Business Meeting

2022 Annual meeting prizes

Twelve \$50 bill credits

will be randomly selected from members who voted.

Two \$100 bill credits

will be given away as grand prizes this year. One winner will be randomly selected from the group of members who join the virtual meeting, and a second winner will be randomly selected from members who voted.

Ballots must be received by June 13.

Prize winners will be announced following the meeting. Winners will receive a notification via email and/or a line item notice on their energy bill.

REMINDERS

MONDAY, MAY 30

Closed for
Memorial Day

THURSDAY, JUNE 16

Virtual Annual
Meeting of the
Members

Contact ECI REC

EMAILS

memberservices@
ecirec.coop
(energy efficiency)

csr@ecirec.coop
(billing, new customers)

WEBSITE
www.ecirec.coop

MANAGEMENT TEAM

Teresa Floyd
Chief Executive Officer
Ext. 450
teresa.floyd
@ecirec.coop

Jennifer Schmitz
Manager of Finance
Ext. 427
jennifer.schmitz
@ecirec.coop

Tom Schmitt
Operations Manager
Ext. 519
tom.schmitt
@ecirec.coop

Adam Albertsen
Manager of
Member Service
Ext. 503
adam.albertsen
@ecirec.coop

Lisa Franck
Manager of
Communications
Ext. 472
lisa.franck
@ecirec.coop

Nathan Groom
Information Services
Manager
Ext. 410
nathan.groom
@ecirec.coop

ADDRESS
2400 Bing Miller Lane
PO Box 248
Urbana, IA
52345-0248

PHONE
319-443-4343

TOLL FREE
877-850-4343

FAX 319-443-4359

HOURS

Monday-Friday
Office: 7:30 a.m. to
4:00 p.m.

(closed Saturdays,
Sundays, and holidays)

Board of Directors Releases 2022 Service Charges and Fees

After careful review and consideration, the ECI REC Board of Directors determined an increase in some of the Cooperative's electric service charges and fees was necessary. The following fees will be effective for member-owners on June 1, 2022.

- » **Disconnect Member-Owned Security Light:**
\$100.00 (unchanged)
- » **Disconnect Power (non-remote):** \$150.00
- » **Locate, Member-Owned Underground Fault:**
\$107.00* (unchanged)
- » **Locate, Member-Owned Underground:**
\$107.00* (unchanged)
- » **Outage Service Call, after hours:**
\$160.50* (unchanged)
- » **Outage Service Call, regular business hours:**
\$107.00* (unchanged)
- » **Reconnect (non-remote), after hours:** \$321.00*
- » **Reconnect (non-remote), regular business hours:** \$160.50*
- » **Test Meter:** \$26.75* (unchanged)
- » **Returned Check:** \$30.00 (unchanged)
- » **Non-Payment Posting:** \$150.00
- » **Non-Payment Disconnect (remote):** \$50.00
- » **Non-Payment Reconnect (remote), after hours:**
\$80.25*
- » **Non-Payment Reconnect (remote), regular business hours:** \$53.50*

*Includes applicable state and local taxes

take the
member challenge

1. COMMUNITY CONNECTED: East-Central Iowa REC is proud to announce we have awarded \$1,000 scholarships to 12 _____ who plan to further their education in a diverse range of programs.

2. CEO MESSAGE: The damage was discovered when a _____ arrived at the shop to respond to a power outage.

3. COOPERATIVE DIFFERENCE: Since ECI REC is a _____ organization, you pay for electricity at cost.

Find the answers within the stories, features, and content of this newsletter and you could win a prize. Send your answers to memberchallenge@ecirec.coop. Or, print the word(s) at the top of the back page, cut it out, and send it to: ECI REC, PO Box 248, Urbana, IA 52345. You may mail your entry along with your electric bill payment, but remember there is a deadline! Entries for this issue must be received by June 1. Sixteen names will be drawn from all correct entries. Members will not be allowed to win more than once per calendar year.

last issue's
challenge winners

The following names were drawn from the March/April 2022 *Heartland Link* entries. These members will receive a \$10 credit on their account.

Lois Schulte	Melinda Steinlage
Russell Lindberg	Clayton Ohrt
Bernice Smolik	Kent D. Anderson
Michael Silhanek	John P. Brown
Donald Jensen	Jeffrey White
Joel Wichgers	Dixie Riggie
David & Laurie Lempia	Russell Sadler
Virginia Staton	Sherry Wilmot

Stay connected! We post operations news and outage updates at facebook.com/eastcentraliowarec.

YOUR BOARD

Board District 1 - Jeff Elliott
(2021/2022 Vice President)

Board District 2 - Julie Kester
(2021/2022 Asst. Secretary/Treasurer)

Board District 3 - Brian McNulty

Board District 4 - Gary McKenna

Board District 6 - Don Shonka

Board District 8 - Nick Donlea

Board District 9 - Steve Rau
(2021/2022 President)

Board District 10 - Ryan Kress
(2021/2022 Secretary/Treasurer)

CLASSIFIEDS: Free to members only

FOR SALE: Story and Clark digital piano, looks like a regular piano, never needs tuned, full keyboard with weighted keys, headphones adapter, cherry wood case with matching bench; \$1,200. Ph: 319-360-5656.

Please email your ad to classifieds@ecirec.coop. Ads for the July/August 2022 *Heartland Link* must be received by June 1, 2022.

East-Central Iowa REC will publish non-commercial advertisements as a service to our members. All ads are free. They may be submitted by any member or employee of East-Central Iowa REC. Ads should contain a phone number, name (if desired), a brief description of items with price if applicable. Each ad is limited to maximum of 50 words; please type or print clearly. Editor reserves the right to edit or reject any ad. No ads will be taken over the telephone—please email, mail, or bring your ad to the office.

Heartland Link (USPS No. 313-160) is published bimonthly for \$3.30 per year by East-Central Iowa Rural Electric Cooperative, 2400 Bing Miller Ln., Urbana, IA 52345-0248 with outposts located at 1707 First St. E. Independence, IA 50644 and 1600 West D. St., Vinton, IA 52349. Periodicals class postage paid at Independence, IA, and additional mailing offices.

POSTMASTER: Send address changes to Heartland Link, 2400 Bing Miller Lane, PO Box 248, Urbana, IA 52345.

Phone: (319) 443-4343
Ownership: East-Central Iowa Rural Electric Cooperative
Publisher: Teresa Floyd
Editor: Lisa Franck

East-Central Iowa Rural Electric Cooperative is an equal opportunity provider, employer, and lender.

CLIP AND MAIL

See inside back cover for the Member Challenge questions.

Answers: 1. _____ 2. _____ 3. _____

Please note: NO ANSWERS will be taken over the phone.

Find tools for members at
www.ecirec.coop



24-Hour Bill Pay With SmartHub

See account information at ecirec.smarthub.coop or download the app.



Outage Center & Map

View current outages via SmartHub or at outages.ecirec.coop:81.



Online Forms

Access rebate, service request, and program sign-up forms.



Call Before You Dig

Notify utilities before you dig at www.iowaonecall.com or call 811.



Co-op Connections®

Get discounts on everyday expenses. Visit www.connections.coop or download the mobile app.



Heartland Link E-Newsletter

Email ecirec@ecirec.coop and ask to receive our newsletter via email.



Iowa Rural Power

Join grassroots advocates for Iowa's electric cooperatives. Visit www.iaruralpower.org.

ECI REC AWARDS SCHOLARSHIPS TO HIGH SCHOOL SENIORS



Kirby Cook

East Buchanan

Parents: Aaron and Patricia Cook, Winthrop
Iowa State University,
Agricultural Studies



Mackenzie Curtis

Starmont

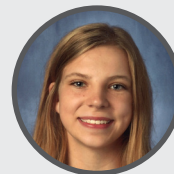
Parents: Chris and Tracy Curtis, Aurora
Cornell College,
Pre-Med



Emma Demuth

Center Point-Urbana

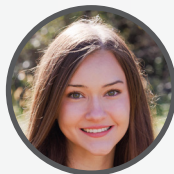
Parent: Julie Demuth Jayne, Urbana
University of Iowa,
Neuroscience



Andrea Dvorak

North Tama

Parents: Joseph and Jennifer Dvorak, Clutier
Central College,
Education



Lauren Hamilton

Oelwein

Parent: Lisa Hamilton, Oelwein
Kirkwood Community College,
Liberal Arts



Gabe Hanson

Union

Parents: Robert and Maureen Hanson, LaPorte City
Lake Land College,
Agricultural Education



Kaden Kingsbury

Vinton-Shellsburg

Parent: Matt Kingsbury, Vinton
Des Moines Area Community College, Engineering



Lance Miller

North Linn

Parents: Daniel and Megan Miller, Walker
Iowa State University,
Kinesiology



Laura Smith

Independence

Parents: Eric and Catherine Smith, Independence
New York University,
Business and Marketing



Alex Ludeking

Benton Community

Parents: George and Theresa Ludeking, Norway
Iowa State University,
Aerospace Engineering



Bowen Munger

Starmont

Parent: Jake Munger, Arlington
Northwest Iowa Community College,
Powerline Technology



Philip Sommerfelt

Jesup

Parents: Lelann and Machel Sommerfelt, Jesup
Hawkeye Community College, Diesel Tech