

heartland LINK

A publication of East-Central Iowa Rural Electric Cooperative

Take Control of Your Energy With SmartHub

Story on page 4

ELECTRIC COOPS ADVOCATE AT STATE LEGISLATURE

page 3

Annual Welcome Back
Legislative Reception recap.

THANK A LINEWORKER

page 5

Iowa Lineworker Appreciation Day
is April 14.



THE OTHER RENEWABLE ENERGY

page 6

Learn more about geothermal.



RELIABILITY REPORT

page 10

Operations team shares 2024
outage minutes summary.



A Touchstone Energy® Cooperative

Photo credit: © Nenitox | Dreamstime.com

IN THIS ISSUE

**03 ELECTRIC COOPS
ADVOCATE AT STATE
LEGISLATURE**

03 WORK ZONE SAFETY

05 THANK A LINEWORKER

**06 THE OTHER
RENEWABLE ENERGY**

Learn more about geothermal.

**06 APRIL IS SAFE
DIGGING MONTH**

07 ON-SITE GENERATION

Notify ECI REC before installation.

**07 5 FACTORS TO CONSIDER
BEFORE INSTALLING HOME
SOLAR**

07 2025 AG REBATES

Invest in efficient equipment and
earn money back.

08 GRAIN BINS

Clearance requirements notice.

08 BURNING DITCHES

**09 IOWA RENEWABLE ENERGY
PRODUCTION**

09 DIRECTOR CREDENTIALS

**09 GROOM COMPLETES
ELECTRIC UTILITY
MANAGEMENT PROGRAM**

10 RELIABILITY REPORT

Operations team shares 2024
outage minutes summary.

10 PRIVACY POLICY

IN EACH ISSUE

**09 YEARS OF SERVICE
RECOGNITION**

11 BOARD OF DIRECTORS

**12 MESSAGE FROM CEO
TERESA FLOYD**



we want to hear from you!



There are three places to find the
ECI REC member survey:

1. Popup at ecirec.coop
2. SmartHub account sidebar
3. QR code to SurveyMonkey page

take the member challenge

1. LOOKING OUT FOR YOU: Following the meeting, the
governor indicated she intends to withdraw the _____
_____ language from her energy omnibus bill this session.

2. ENERGY WISE: You can register your account for _____
through our mobile app or web portal.

3. KEEPING THE LIGHTS ON: In 2024, we hit another mile-
stone and further lowered our _____ outage minutes
per member to 21.5 minutes!

Find the answers within the stories, features, and content of this newsletter
and you could win a prize. Send your answers to memberchallenge@ecirec.coop. Or, print the word(s) at the top of the back page, cut it out, and send it
to: ECI REC, PO Box 248, Urbana, IA 52345. You may mail your entry along
with your electric bill payment, but remember there is a deadline! Entries
for this issue must be received by April 1. Sixteen names will be drawn from
all correct entries. Members will not be allowed to win more than once per
calendar year.

last issue's challenge winners

The following names were drawn from the January/February 2025 *Heartland Link* entries. These members will receive a \$10 credit on their account.

Larry Haars

Sherry R. Wilmot

Robert D. Briggs

Robert E. Davidson

Steven M. Vaughn

Michael Hild

Susan Harder

Marvin D. Dostal

Porcia A. Grover

Nyle Vargason

Craig I. Whitesell

John H. Noe

Delores M. Meyer

Richard A. Griswold

Four Winns LC

Sharon Kokinos

Calendar Notes

MARCH 9 –
Daylight Saving Time

APRIL 13 –
Palm Sunday

APRIL 18 –
Good Friday

APRIL 20 – Easter

Contact ECI REC

EMAILS

memberservices@ecirec.coop
(rebates, product sales)

csr@ecirec.coop
(billing, new customers)

WEBSITE

www.ecirec.coop

MANAGEMENT TEAM

Teresa Floyd
Chief Executive Officer
Ext. 450
teresa.floyd@ecirec.coop

Jennifer Schmitz
Manager of Finance
Ext. 427
jennifer.schmitz@ecirec.coop

Tom Schmitt
Operations Manager
Ext. 519
tom.schmitt@ecirec.coop

Adam Albertsen
Manager of Member
Service
Ext. 503
adam.albertsen@ecirec.coop

Lisa Franck
Manager of
Communications
Ext. 472
lisa.franck@ecirec.coop

Nathan Groom
Information Services
Manager
Ext. 410
nathan.groom@ecirec.coop

ADDRESS
2400 Bing Miller Lane
PO Box 248
Urbana, IA
52345-0248

PHONE
319-443-4343

TOLL FREE
877-850-4343

FAX 319-443-4359

HOURS

Monday-Friday
Office: 7:30 a.m. to
4:00 p.m.

(closed Saturdays,
Sundays, and holidays)

Stay connected! We post operations news and outage
updates at facebook.com/eastcentraliowarec.

Electric Cooperatives Advocate for Affordable, Reliable Power as State Legislative Session Begins

a Looking Out for You feature

ON JANUARY 14, nearly 170 senior staff and directors from Iowa's electric cooperatives—including ECI REC's Board President Steve Rau and Director Gary McKenna—traveled to downtown Des Moines to attend the annual Welcome Back Legislative Reception. At the event, cooperative advocates discussed concerns and priorities with their state legislators, including important issues that could impact the affordability and reliability of electricity. The Iowa Association of Electric Cooperatives hosted the reception in conjunction with the Iowa Biotechnology Association, the Iowa Communications Alliance, the Iowa Institute for Cooperatives, and FUEL Iowa.

"This is an important meeting with our legislators to discuss our 2025 issues and priorities," said President Rau. "It is a busy time at the Capitol. However, we were fortunate enough to meet with Senator Dan Zumbach and Representatives Craig Johnson and Chad Ingels."

One key topic of discussion at the reception was protecting the state's defined electric service territories—IAEC's top legislative priority this session.

In Iowa, your location determines which electric utility will serve your home, farm, or business. For almost 50 years, these defined electric service areas have provided certainty to electric cooperatives as we work to maintain affordable rates, foster a resilient electric grid, and invest in economic development throughout rural Iowa. Recently, legislation was drafted that could have removed Iowa's electric service territory protections.

However, the grassroots efforts of cooperative advocates have paid off! In February, cooperative managers from across the state met with Governor Reynolds. Following the meeting, the governor indicated she intends to withdraw the service territory language from her energy omnibus bill this session. You can learn more about this issue at ProtectRuralIowa.com.

In the coming months, Iowa's 91st General Assembly will continue to address a multitude of issues, including energy-related matters that are central to Iowa's rural economy. Beginning with the Welcome Back Legislative

Reception and the February meeting with Governor Reynolds, Iowa's electric cooperatives will again be important advocates for a balanced approach in addressing energy issues as we work to power lives and empower communities.

We'll have another opportunity to advocate for our members and communities at the annual Rural Electric Cooperative Day on the Hill on March 19. Learn more about electric cooperative advocacy efforts at IAruralpower.org.



RESPECT THE
WORK ZONE
ZONE

SO WE ALL GET
SLOW
HOME

2025 NATIONAL WORK ZONE AWARENESS WEEK

April 21-25, 2025

When approaching a work zone, here's what to do:
SLOW DOWN. MOVE OVER. PROCEED WITH CAUTION.

Roadworkers' safety is in our hands!
#SlowDownMoveOver #WorkzoneSafety

Take Control of Your Energy With SmartHub

an Energy Wise spotlight



Life can be busy and sometimes overwhelming. However, managing your ECI REC electric account with our SmartHub mobile app and web portal makes overseeing your energy usage and bill payments a breeze. Save time and money by managing your account anytime from anywhere.

SmartHub gives you complete control over your account by giving you the tools that deliver the right information at the right time, so you can make the right decisions.

How Can Smarthub Help You Control Your Account?

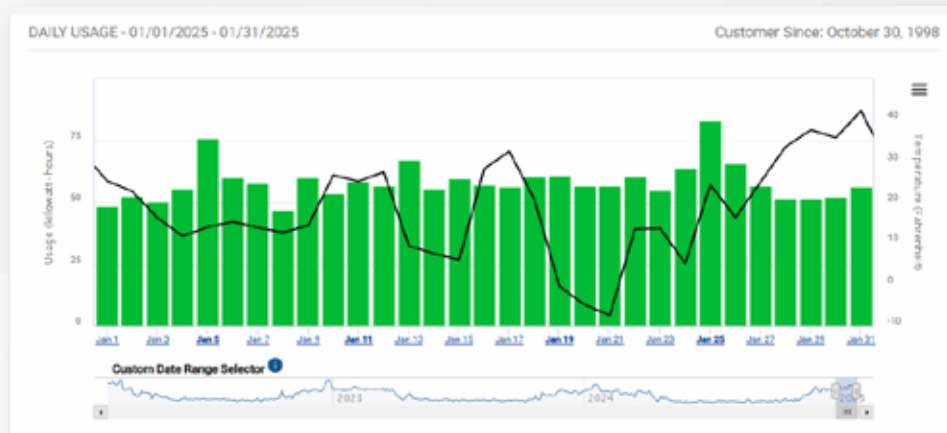
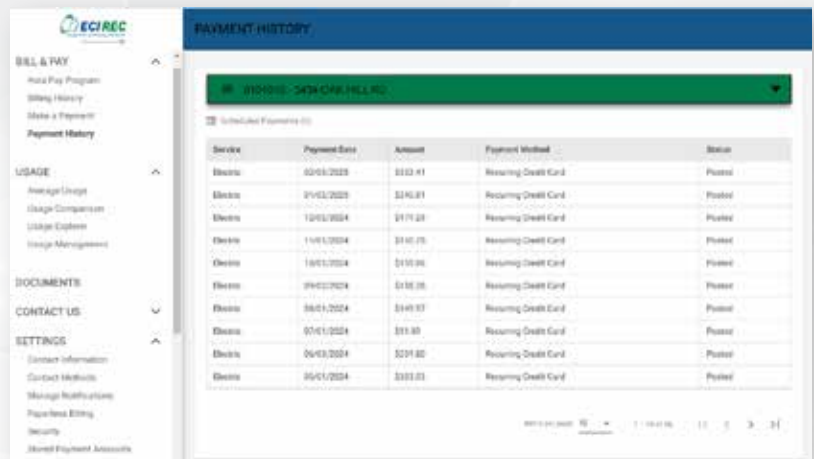
Billing & Payments

No more waiting for your bill to arrive in the mail! With SmartHub, you can access your bill via the app or online portal. You'll save time with easy payment options that will help you avoid late fees and service interruptions. You can also access your payment history.

Interested in saving a tree while you save time? Activate SmartHub paperless billing!

Alerts & Notifications

Stay informed on important account events via email. You'll receive the information you need to make the right decisions about your account.



Usage Explorer

It's important to know how much electricity you're using. SmartHub's Usage Explorer gives you a detailed look at your past and current usage, all in one place. You can view your power use alongside weather trends by month, day, or hour. For example, if you set filters for the graphs—like date ranges or specific meters—you can view a breakdown of monthly costs with temperature data overlaid on top.

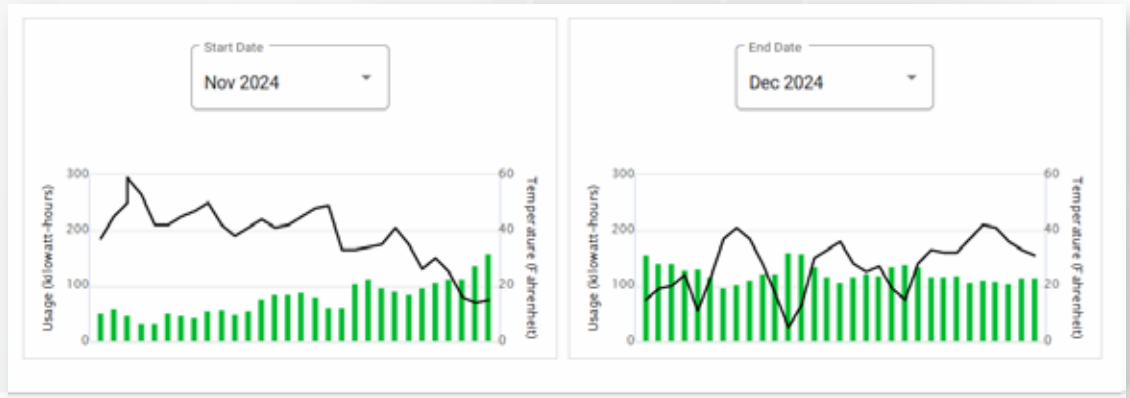
Average Usage

One of the most powerful features of SmartHub is the ability to see how much electricity you typically use during a specific period. With this information, you can determine when you can cut back to save money on your bill. The top section of this tool allows you to set filters for the graph, such as date ranges or specific accounts. The graph shows the type of report you selected, as well as average temperatures for that month, week, or time of day.



Usage Comparison

This tool lets you compare two monthly bills side by side to see “this year vs. last year” or “this month vs. last month.” You can see how the weather and temperature affect your monthly bills. Using this tool is a good way to determine whether new energy habits or an appliance are having a positive effect on your usage. 🌱



Registering for SmartHub

Mobile App Download

To download our free, secure SmartHub app, scan the QR codes below or visit ecirec.smarthub.coop.



APPLE



ANDROID

Step 1: Be ready with an email address and your account number. You can find your account number on your bill.

Step 2: Register your account in SmartHub. You can register your account for free through our mobile app or web portal.

Step 3: Activate the features you want. Enroll in features like alerts/notifications, auto pay, and paperless billing to have more control over your account.

Step 4: Manage your account anytime, from anywhere. The more features you take advantage of, the more time and money you can save!

Need assistance? If you have any questions or issues, email ecirec@ecirec.coop or call 877-850-4343.

Iowa Lineworker Appreciation Day is Monday, April 14

Has one of our lineworkers made a difference for you? Visit us at facebook.com/eastcentraliowarec and #ThankALineworker!



TOP 10 reasons we appreciate lineworkers

1. They are expertly trained to work on power lines and equipment.
2. They are dedicated to safely and efficiently maintaining power.
3. They have a heart for service, always looking out for their communities.
4. They conquer heights without hesitation.
5. They prioritize safety every second of every day.
6. They answer the call - day or night - to restore power.
7. They work in extreme weather conditions.
8. They go when and where they are needed, supporting communities nationwide when severe weather strikes.
9. They have each other's backs and work together like family.
10. They power our lives and energize our communities!

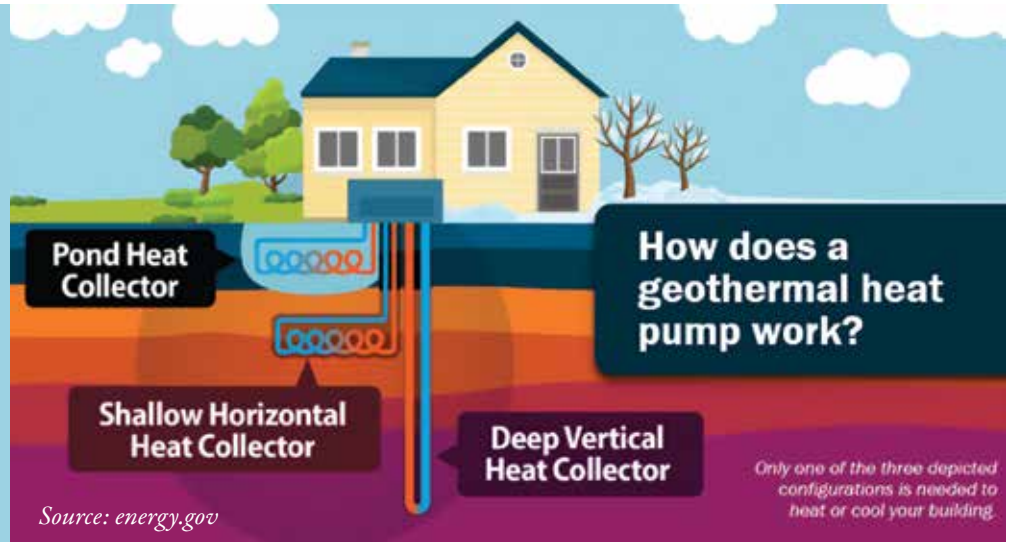
Thank you, lineworkers, for all you do to keep the lights on.

Geothermal: The Other Renewable Energy

an Energy Wise feature

What is geothermal energy?

“Geothermal” literally means “heat from the earth.” Geothermal energy is a renewable heat source found under the surface of the earth. It is reliable because it is always available, regardless of weather conditions. Geothermal is also clean, with emissions as low as solar, wind, and hydropower.



GEO THERMAL

EARTH HEAT

What are the advantages over other renewables?

Geothermal heat pumps are not affected by:

- » Snow coverage
- » Overcast days
- » Extreme wind
- » Extreme temperatures

GHPs use electricity to transfer heat to and from the ground, so they help bring in revenue rather than take it away.

What are geothermal heat pumps?

- » Geothermal heat pumps (GHPs) are clean, efficient systems for heating and cooling that can be installed in various ways.
- » GHPs may also supply your home with a steady stream of hot water, reducing your energy costs.
- » GHPs take advantage of constant underground temperatures to efficiently exchange temperatures, heating homes in the winter and cooling homes in the summer.
- » The diagram above shows what types of GHP systems are available for use in homes and other buildings.

Why are geothermal heat pumps good for cooperative members?

- » They have the lowest operating cost of any heating/cooling system available to members today.
- » They are recognized by the EPA as a renewable energy source.
- » Federal tax credits are available for residential and commercial properties.
- » ECI REC offers rebates.
- » Members may qualify for ECI REC's special Heat Plus rate.
- » They provide consistent comfort.
- » There is no outside central air conditioner noise.
- » The heating/cooling system is located inside the home. 🏠




April Is Safe Digging Month

Spring is near, and you may be planning outdoor projects. Whether it's a deck addition, planting a tree, trenching in fields, or a landscaping masterpiece, remember to call Iowa One Call by dialing 811 before you dig. Although light gardening typically doesn't call for deep digging, other seemingly simple tasks like planting shrubs or installing a new mailbox post can damage utility lines. A severed line can disrupt service to an entire neighborhood, harm the person digging, and potentially result in fines and repair costs.

Installing On-Site Generation? Notify ECI REC

FOR YOUR SAFETY AND OURS, members who own alternative energy production facilities that will be attached to an electric transmission or distribution line are required to notify their utility. If you have questions, please contact ECI REC at 877-850-4343.

No matter how small, the owner of the facility is required to provide written notification to their utility of their intent to construct or install the facility at least 30 days prior to construction. In the written notice, you must provide information on the type of facility (solar-powered heat pumps, for example) and the anticipated completion date of the construction.

Alternative energy production facilities are defined as solar, wind turbine, waste management, resource recovery, refuse-derived fuel, agricultural crops or residues, or wood-burning facilities that are used to generate electricity. 

5 FACTORS TO CONSIDER BEFORE INSTALLING HOME SOLAR

1 FIND OUT YOUR HOME'S ENERGY USE
Look at your energy bill(s) to review kWh usage for the past 12 to 24 months and calculate the average monthly usage.

2 CONTACT YOUR ELECTRIC UTILITY
Because most residential systems are tied to the power grid, reach out about safety and connection requirements and fees.

3 LOCATION, LOCATION, LOCATION
Start considering panel location. Assess the age, size, and condition of your roof as well as available ground space.

4 DO YOUR HOMEWORK
Ensure the company you are considering has installers who are specially trained and certified to install solar, among other factors.

5 GET SEVERAL QUOTES
There are costs other than equipment, such as permitting, installation, and inspection. Make sure all costs are included in quotes.

Photo credit: Cooperative.com, EElmagDatabase

To learn more, visit [energy.gov](https://www.energy.gov) and search for "Homeowner's Guide to Going Solar." Use the dropdown titled "How much power can I generate with solar" for information on PVWatts, a solar energy production and cost estimator.



Celebrate With ECI REC's 2025 Ag Rebates

an Energy Wise feature

VENTILATION AND CIRCULATION

- » Ventilation fans (BESS lab rated at 0.10 in static pressure): \$3/in. (fan blade diameter)
- » Ventilation thermostat controllers with humidistats: \$25 each
- » Circulation fans (BESS lab rated at thrust/kW requirements): \$1/in. (fan blade diameter)
- » High-volume, low-speed fans (minimum 10 ft. diameter): \$35/ft. (fan blade diameter)

DAIRY OPERATIONS

- » Dairy heat reclaimers: \$5 per milking cow
- » Dairy milk pre-coolers: \$4 per milking cow
- » VSD vacuum pumps: \$40/horsepower
- » Scroll compressors: \$250 each (must replace reciprocating compressor)


LIVESTOCK EQUIPMENT

- » Electric-heated livestock waterers: \$50 each ($\leq 175W$ per trough opening)
- » Single-crate heating pads: \$25/pad ($\leq 85W$)
- » Double-crate heating pads: \$50/pad ($\leq 170W$)
- » Heat lamps or pad controllers: \$50/controller

HORTICULTURE LED FIXTURES

Horticulture lighting must be classified as such in the qualified products list published online at designlights.org by the DesignLights Consortium.

- » 8–14W, \$10/fixture
- » 15–49W, \$15/fixture
- » 50–99W, \$25/fixture
- » > 100W, \$40/fixture

Some conditions apply. Refer to the equipment rebate forms at ecirec.coop for qualifications and detailed requirements. 

Grain Bin Clearance Notice

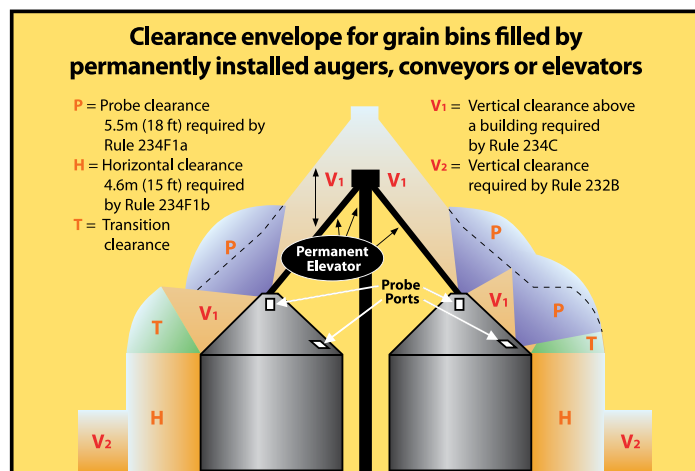
AS REWARDING AS IT MAY BE, farming is an extremely difficult job—it ranks among the top 10 most dangerous professions in the United States. At ECI REC, safety is a top priority for both our employees and our members. That's why we are required by the Iowa Utilities Board to provide this annual notice to farmers, farm lenders, grain bin merchants, and city and county zoning officials.

The State of Iowa requires specific clearances for electric lines around grain bins, with different standards for those filled by portable and permanent augers, conveyors, and elevators. Whether you're purchasing new grain bins or remodeling areas with existing bins, you must consider proximity to overhead power lines. The drawings accompanying this article show the specific clearances required for both scenarios. If you have any questions concerning the drawings, please contact your Cooperative.

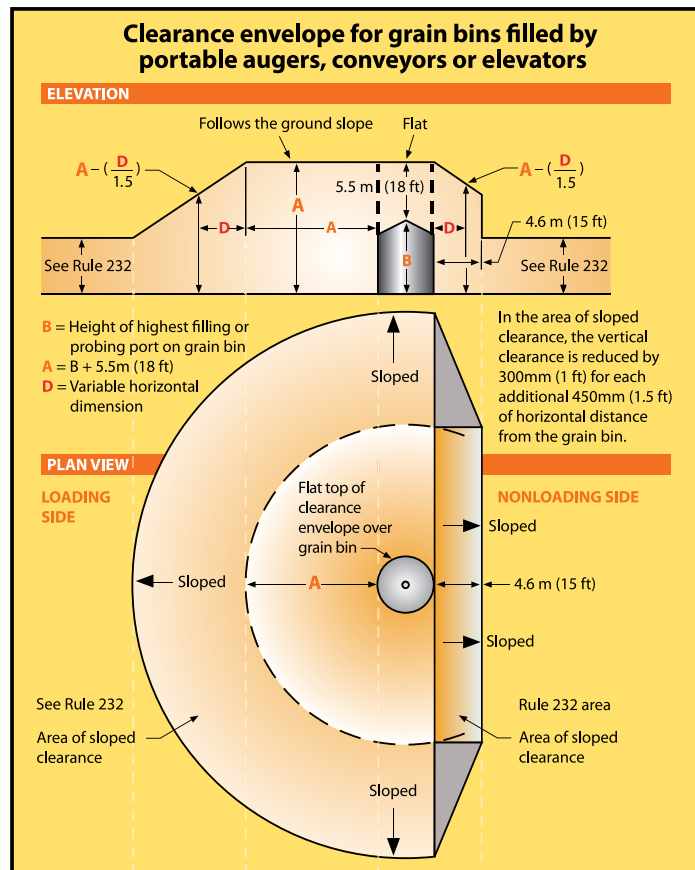
According to the Iowa Electric Safety Code, which is found in Iowa Administrative Code Chapter 199 – 25.2(3) b: An electric utility may refuse to provide electric service to any grain bin built near an existing electric line that does not provide the clearances required by the American National Standards Institute (ANSI) C2-2017 "National Electrical Safety Code," Rule 234F. This paragraph "b" shall apply only to grain bins loaded by portable augers, conveyors, or elevators built after September 9, 1992, or to grain bins loaded by permanently installed augers, conveyors, or elevator systems installed after December 24, 1997. (As adopted by the Iowa Utilities Board.)

DISCLAIMER: These drawings are provided as part of ECI REC's annual public information campaign and are based on the 2017 edition of the National Electrical Safety Code. To view the actual drawings, refer to that publication.

Every care has been taken to ensure the correctness of the contents of these drawings. However, ECI REC accepts no liability whatsoever for omissions or errors, technical inaccuracies, typographical mistakes, or damages of any kind arising from the use of the contents of these drawings, whether textual or graphical.



From IEEE Std. C2-2017, "National Electrical Safety Code." © Copyright 2016 by IEEE. All rights reserved.



From IEEE Std. C2-2017, "National Electrical Safety Code." © Copyright 2016 by IEEE. All rights reserved. The IEEE disclaims any responsibility or liability resulting from the placement and use in the described manner.

ATTENTION MEMBERS:



Use Caution When Burning Ditches

Burning helps clean things up, but it can also cause extensive damage to Cooperative property, resulting in electric service problems.

Members involved in such fires may be invoiced for damage they cause to Cooperative property.

TWO TIPS FOR SAFE BURNING

- 1 Green, or newer, poles are more susceptible to burning—use extra caution.
- 2 Always be aware of the locations of poles, anchor guy assemblies, underground cabinets, and other important Cooperative equipment when burning.

Support Iowa's Renewable Energy Production

You can help advance renewable energy production facilities in Iowa by contributing through your monthly bill. In 2024, an average of 65 ECI REC members participated in the program per month. Collectively, they contributed \$2,954.70 over the year—an average of \$246.23 per month—in support of renewable energy development.



Scan the QR code to find more details on our website and fill out the form.

IOWA RENEWABLE CONTRIBUTION PROGRAM

Name: _____

ECI REC Account #: _____

Email: _____

Daytime phone #: _____

Signature: _____

Date: _____

I wish to support the purchase of:

☐ 100 kWh for an extra \$2.10 per month

☐ 200 kWh for an extra \$4.20 per month

☐ 300 kWh for an extra \$6.30 per month

_____ kWh at \$2.10 per 100 kWh per month

Please return to: East-Central Iowa REC
PO Box 248 | Urbana, Iowa 52345

Photo credit: Michael Lynch, NRECA

Congratulations to Our Credentialed Directors!

a Cooperative Difference shoutout

OUR DIRECTORS work hard for our membership, continuing their education through state-wide and national programs offered throughout the year. Check out the credentials ECI REC's directors have earned!

BOARD LEADERSHIP PROGRAM

- » Jeff Elliott
- » Gary McKenna
- » Steve Rau

CREDENTIALED COOPERATIVE DIRECTORS

- » Jeff Elliott
- » Julie Kester
- » Gary McKenna
- » Steve Rau

DIRECTOR GOLD CREDENTIAL

- » Jeff Elliott
- » Gary McKenna
- » Steve Rau

THANK YOU FOR YOUR YEARS OF SERVICE!

March Anniversaries



DAVE HENKES
Engineering Design
Technician – 30 years



COLTON WOLFE
Lineworker – 7 years



TRENT KOOPMANN
Apprentice
Lineworker – 3 years



ALIZA MOLLENHAUER
Member Service
Representative – 1 year

April Anniversaries



DOUG APPELGATE
SCADA Technician
27 years



NATHAN GROOM
Information Services
Manager – 18 years



ROBERT DERIFIELD
Information Services
Technician – 13 years



JOSH COX
Lineworker – 7 years

ECI REC Information Services Manager Prepares for the Future

a Keeping the Lights On spotlight

INFORMATION SERVICES MANAGER NATHAN GROOM

recently graduated from the Management Internship Program (MIP), an intensive program in electric utility management. This series of workshops is offered by the National Rural Electric Cooperative Association in conjunction with the University of Wisconsin. Participants are guided through all facets of the electric utility industry.

Congratulations, Nathan!

2024 Reliability Report

a Keeping the Lights On update

Greetings from the Operations Department at East-Central Iowa REC! We hope 2025 has started out great for everyone.

AT ECI REC, our goal is to provide safe, reliable, and affordable electricity to our members. Looking back on 2024, we are very proud of the strides we made to strengthen our distribution system.

In 2023, we saw 28.2 outage minutes per member, which was our lowest ever recorded controllable outage minutes. In 2024, we hit another milestone and further lowered our controllable outage minutes per member to 21.5 minutes! This is an accomplishment that only happens with a lot of hard work and total commitment from everyone at ECI REC—and when Mother Nature behaves. Great job and thank you to all Cooperative employees and directors!

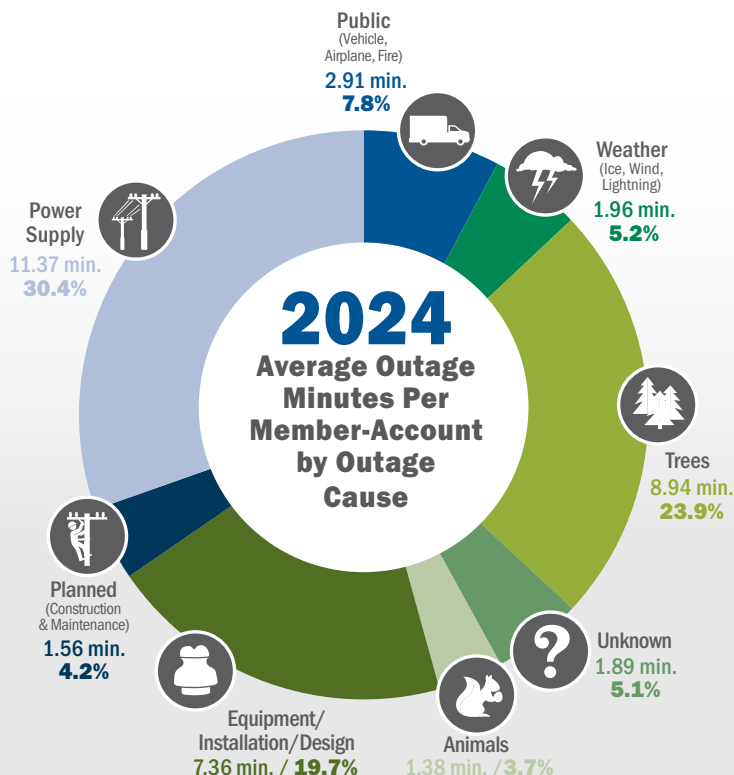
While 21.5 outage minutes is great, we are committed to continually improving our reliability. This pie chart provides a breakdown of 2024's controllable outage minutes and outages that were not directly controllable, as well as outage causes.

ECI REC has already started working toward having a great 2025. As soon as the new year began, our crews were busy designing and staking projects, replacing poles, doing annual line inspections, and working on other maintenance projects. Our overhead construction contractor has begun working on 2025 Work Plan projects, and our tree contractor has begun trimming trees. Pole inspections and underground Work Plan projects will start when the frost leaves the ground. This work will continue throughout the year.

We'd like to thank all our members for being part of our Cooperative family! Your support enables us to keep making improvements to better serve you. As always, don't hesitate to call with your electrical questions or to report any safety concerns. 📞

The categories shaded in green represent outages ECI REC could reasonably expect to control: 21.53 min. (57.6%)

The blue categories represent events we consider out of ECI REC control: 15.84 min. (42.4%)



Privacy Policy for East-Central Iowa REC

Our Commitment to Privacy: At East-Central Iowa REC, confidentiality is very important to us. As we continue to improve and expand our services and delivery channels, we recognize our customers' need and desire to preserve their privacy and confidentiality. East-Central Iowa REC recognizes the trust you have placed in us and is committed to safeguarding the privacy of our customers' information. The following policy affirms our continued commitment to preserving customer confidentiality.

The Information We Collect: We receive and retain information about our customers through many sources:

- » Information we receive from you on applications or other forms;
- » Information about your transactions with us, our affiliates, or others; and
- » Information we receive from a consumer-reporting agency.

The Way We Use Information: We limit the use and collection of nonpublic personal information to that which is necessary to maintain and administer financial services. We do not share this information with outside parties unless:

- » The information is provided to help complete a customer-initiated transaction (such as credit reporting agencies, document processing companies, etc.);
- » The customer has requested it;
- » The disclosure is required by law (e.g., subpoena, investigation of fraudulent activity, etc.); or
- » The disclosure is required by banking regulation (e.g., Fair Lending Reporting Act, Home Mortgage Disclosure Act).

When customer information is provided to any of the third parties just mentioned, that third party must agree to adhere to privacy principles that provide for keeping such information confidential.

Limiting Employee Access to Information: East-Central Iowa REC limits employee access to customer information to those with a business reason for knowing such information. All of our employees are educated on the importance of confidentiality and customer privacy. Any employee who violates the financial privacy of our customers will be subject to appropriate disciplinary measures and possible termination.

Protection of Information via Established Security Procedures: To prevent unauthorized access, maintain data accuracy, and ensure the correct use of information, we have put in place appropriate physical, electronic, and managerial procedures to safeguard and secure the information.

Maintaining Accurate Information: We have established procedures so that our customers' financial information is accurate, current, and complete in accordance with reasonable commercial standards. East-Central Iowa REC will respond to requests to correct inaccurate information in a timely manner.

At East-Central Iowa REC, we value our customer relationships. We want you to understand how we use the information you provide and our commitment to ensuring your personal privacy. If you have any questions about how East-Central Iowa REC protects your information, please contact us at 877-850-4343 or email ecirec@ecirec.coop.

Message From the CEO

continued from page 12

>>> Retirement of patronage

Unlike investor-owned utilities that maximize profits to pay dividends to shareholders, not-for-profit electric cooperatives provide members with “at cost” electric service. At the end of the year, after all operational expenses have been covered, a portion of any excess funds are allocated back to our members in the form of capital credits. With a positive outlook for 2024, your Board of Directors elected to retire over \$600,000 in patronage dividends. Over 64% of the retirement was returned to current members via credit on their June 2024 energy bills.

>>> Investing in our future

Looking ahead to 2025, we will continue implementing strategic investments to further strengthen your Cooperative. A significant portion of our budget will be allocated toward plant upgrades, ensuring our infrastructure remains resilient and capable of meeting the evolving energy needs of our membership. This includes rebuilding over 26.4 miles of overhead distribution lines, as well as investing over \$4 million in Work Plan projects (see the 2025 Construction Work Plan budget below).

Additionally, your Cooperative continues to invest in upgrades and new technologies. Initiatives for 2025 include a field area network upgrade,

as well as continued investments in cybersecurity and office network infrastructure.

>>> Prioritizing maintenance for long-term sustainability

Regular inspections and our vegetation management program proactively address potential issues and extend the lifespan of the Cooperative’s distribution assets. In 2024, the Cooperative invested over \$335,000 in maintenance programs, and \$480,000 is earmarked for 2025. This commitment to maintenance is essential for preserving reliability and minimizing future service disruptions.

>>> Investing in our greatest asset: our people

ECI REC’s strength lies in the dedicated individuals who work tirelessly to keep the lights on for you, our member-consumers. In 2024, we invested over 2,550 hours in employee development. Most of this investment went to our number-one priority: safety! In 2025, we will continue to invest in our workforce through training programs and professional development opportunities. By nurturing an innovative and dedicated team, we ensure your Cooperative remains a leader in providing reliable, affordable, and sustainable electricity.

As we embrace our 2025 theme—Building on the Past to Grow the Future—we reflect on ECI REC’s rich history and reaffirm our unwavering commitment to serving you, our valued members.

Our journey began with the mission to bring reliable electricity to rural communities, and that foundational purpose continues to guide us today. Thank you for being part of our Cooperative family! 🙌

2025 Construction Work Plan Budget

26.4 miles of line replacement	\$2,055,000
Pole, equipment, and conductor replacement	\$931,107
New transformers, meters, and special equipment	\$380,952
Sectionalizing equipment (e.g., breakers and fuses)	\$180,240
Service upgrades	\$166,424
New services construction	\$147,442
SCADA technology	\$96,000
Substation investment	\$55,000
Outdoor lighting	\$33,341

YOUR BOARD

- Board District 1 - Jeff Elliott
2024/2025 Vice President
- Board District 2 - Julie Kester
2024/2025 Secretary/Treasurer
- Board District 3 - Brian McNulty
- Board District 4 - Gary McKenna
- Board District 6 - Pete Burmeister
2024/2025 Assistant Secretary/Treasurer
- Board District 8 - Nick Donlea
- Board District 9 - Steve Rau
2024/2025 President
- Board District 10 - Gary Cook

CLASSIFIEDS: Free to members only

Please email your ad to classifieds@ecirec.coop. Ads for the May/June 2025 *Heartland Link* must be received by April 1, 2025.

East-Central Iowa REC will publish non-commercial advertisements as a service to our members. All ads are free. They may be submitted by any member or employee of East-Central Iowa REC. Ads should contain a phone number, name (if desired), a brief description of items with price if applicable. Each ad is limited to maximum of 50 words; please type or print clearly. Editor reserves the right to edit or reject any ad. No ads will be taken over the telephone—please email, mail, or bring your ad to the office.

Heartland Link (USPS No. 313-160) is published bimonthly for \$3.30 per year by East-Central Iowa Rural Electric Cooperative, 2400 Bing Miller Ln., Urbana, IA 52345-0248 with outposts located at 1707 First St. E., Independence, IA 50644 and 1600 West D. St., Vinton, IA 52349. Periodicals class postage paid at Independence, IA, and additional mailing offices.

POSTMASTER: Send address changes to Heartland Link, 2400 Bing Miller Lane, PO Box 248, Urbana, IA 52345.

Phone: 319-443-4343

Ownership: East-Central Iowa Rural Electric Cooperative

Publisher: Teresa Floyd

Editor: Lisa Franck

East-Central Iowa Rural Electric Cooperative is an equal opportunity provider, employer, and lender.

CLIP AND MAIL

See page 2 for the Member Challenge questions.

Answers: 1. _____ 2. _____ 3. _____

Please note: NO ANSWERS will be taken over the phone.

Find tools for members at
www.ecirec.coop



24-Hour Bill Pay With SmartHub

See account information at ecirec.smarthub.coop or download the app.



Outage Center & Map

View current outages via SmartHub or at outages.ecirec.coop:81.



Online Forms

Access rebate, service request, and program sign-up forms.



Call Before You Dig

Notify utilities before you dig at www.iowaonecall.com or call 811.



Co-op Connections®

Get discounts on everyday expenses. Visit www.connections.coop or download the mobile app.



Heartland Link E-Newsletter

Email ecirec@ecirec.coop and ask to receive our newsletter via email.



Iowa Rural Power

Join grassroots advocates for Iowa's electric cooperatives. Visit www.iaruralpower.org.



CEO TERESA FLOYD

Message From the CEO: GROWING THE FUTURE

Recapping 2024 and Looking Ahead to 2025

IT CAN BE SAID LAST YEAR was indeed remarkable for your Cooperative, filled with historically low outages, as well as strategic investments in our infrastructure, maintenance, and employees. Let's take a moment to reflect on the successes and milestones of 2024 and share our vision for 2025!

>>> Low outages, high reliability

One of the key highlights of 2024 was a record low outage total of 21.5 average minutes per member-account. (For perspective, the previous record was set in 2023, and it was 28.2 minutes!) This number is based on the outages we could control. It does not include planned or scheduled outages or outages caused by the public or power supplier.

A big thank you to our dedicated team of lineworkers and support staff, which responds and restores power as quickly and safely as possible. Our continued investment in plant upgrades, proactive maintenance program, and good weather also played a big part.