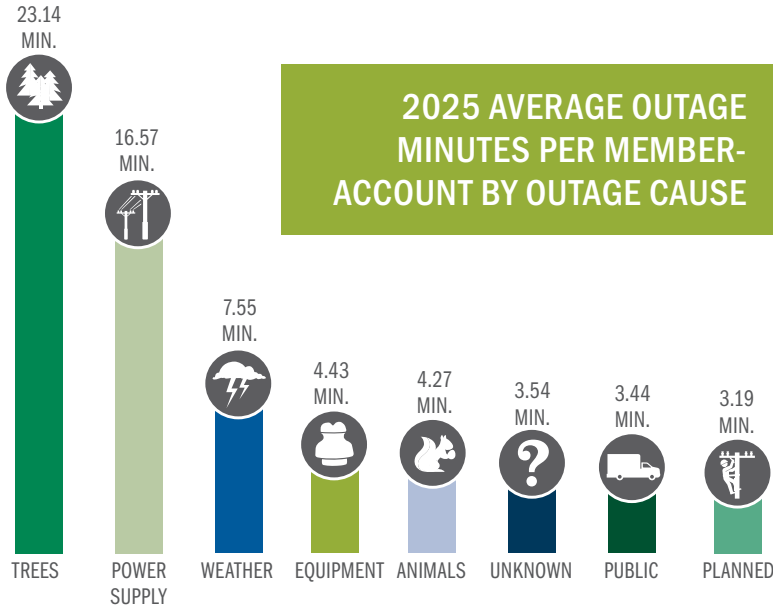


BOARD PRESIDENT & CEO MESSAGE

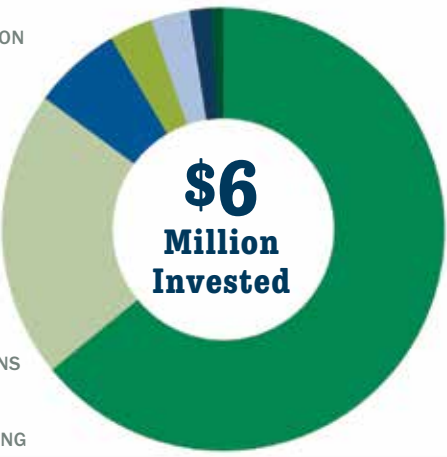


2025 AVERAGE OUTAGE MINUTES PER MEMBER-ACCOUNT BY OUTAGE CAUSE



ALLOCATION OF FUNDS

- INFRASTRUCTURE IMPROVEMENTS **\$3,855,387**
- MAINTENANCE OF DISTRIBUTION SYSTEM **\$1,264,481**
- VEGETATION MANAGEMENT (TREE TRIMMING) **\$387,990**
- MAINTENANCE OF METERS & TRANSFORMERS **\$189,477**
- OPERATIONS TECHNOLOGY **\$172,433**
- MAINTENANCE OF SUBSTATIONS **\$92,670**
- POLE & UNDERGROUND TESTING **\$54,753**



Our Year in Review

As we reflect on 2025, we see how your Cooperative continued to make meaningful investments to ensure the safe, reliable delivery of electricity to every member we serve. Guided by a strong strategic vision from your Board of Directors and powered by the dedication of our employees, we remain focused on delivering exceptional service while protecting the long-term financial health of ECI REC.

Every accomplishment begins with a solid foundation in the boardroom. Your Board’s priorities—safety, infrastructure investment, technology advancement, employee development, and financial stewardship—shape the decisions we make each day. At the same time, the Board closely monitor legislative and regulatory developments that may impact your Cooperative and our members.

In 2025, we invested more than \$6 million in system infrastructure improvements and ongoing operations and maintenance. These investments are critical to keeping your lights on and your power reliable. While July storms contributed to an increase in outage time compared to 2024, the average annual outage minutes within our control remained at 42.9 minutes per member—a testament to the strength and responsiveness of our system.

Safety remains our top priority. In November, we proudly

CONTINUED ON THE NEXT PAGE

CONNECT WITH ECI REC

Emails
memberservices@ecirec.coop
 (rebates)
csr@ecirec.coop
 (billing, new customers)

Address
 2400 Bing Miller Lane
 PO Box 248
 Urbana, IA
 52345-0248

Phone
 319-443-4343
Toll Free
 877-850-4343
Fax
 319-443-4359

Hours
 Monday–Friday
 Office: 7:30 a.m. to 4:00 p.m.
 (closed Saturdays,
 Sundays, and holidays)

Website
ecirec.coop
Facebook
facebook.com/eastcentraliowarec
 (operations news and general updates)

CO-OP OPERATIONS IN ACTION

celebrated 500,000 hours without a lost-time accident, a significant milestone that reflects our culture of accountability and care. In addition, we invested substantial time in employee education and professional development to ensure our team remains highly trained and prepared to serve you.

Looking ahead, your Board approved a comprehensive four-year Work Plan that's designed to continue strengthening our infrastructure and maintain the level of reliability you expect and deserve. Importantly, these significant investments in 2025—and the continued investments planned for 2026—were made without increasing base electric rates, demonstrating our commitment to balancing reliability with responsible financial management.

Your Cooperative exists to serve you. Every decision, every investment, and every improvement is made with our members in mind. Thank you for the opportunity to serve your homes, farms, and businesses.

OPERATING STATISTICS	2025	2024
Members	7,329	7,264
Total Services Connected	9,261	9,224
Distribution Miles Energized	2,298	2,301
Average Services per Mile	4	4
kWh Sold	225,351,809	214,470,350
Wholesale Power Cost per kWh Sold	\$0.0639	\$0.0628
Average Revenue per kWh Sold	\$0.1196	\$0.1146
Average Patronage Dividend Payment	\$72.81	\$70.74
Full-Time Employees	31	33
Outage Minutes Total	66.1	37.4

INFRASTRUCTURE, METERS, & MEMBERS

Empowering Energy Savings for Members

\$108,380
in your pockets through



190
energy efficiency rebates

2,298
miles of overhead and underground line maintained

4,500+
pole inspections in 2025

46,000
poles in our system

101 interconnected member-owned onsite generation facilities



11,475
AMI meters at work serving

7,329
memberships

9,261
member accounts

ECI REC owns and maintains **24** substations



FINANCIAL HIGHLIGHTS

2025 Financial Overview

Operating Revenue

Operating revenues increased by **\$1.2 million** over 2024, totaling **nearly \$27 million**—all from the sale of electricity and related services.

Net Margins

The Cooperative finished the year with **\$2.8 million** in net margins. As a not-for-profit utility, these margins are allocated to patronage capital, reserves for losses, and surplus in accordance with Iowa law.

System Investment

We invested **\$4.6 million** in utility plants, including:

- ✓ 28.2 miles of distribution line
- ✓ Replacement of more than 800 poles
- ✓ \$700,000 in fleet upgrades

These projects were funded with **\$4 million in long-term borrowing**, with the remaining balance funded through rates.

Capital Credits Returned

In May 2025, the Board approved the retirement of **\$601,038** in patronage dividends (100% of 2010 margins and 8.4% of 2016 margins).

Independent Audit

An independent audit by CliftonLarsonAllen, LLP, confirmed the financial statements conform to generally accepted accounting principles, with no issues identified.



Over the past **10 years**, we've returned

\$5,443,390
to members.

Statement of Revenue & Expense

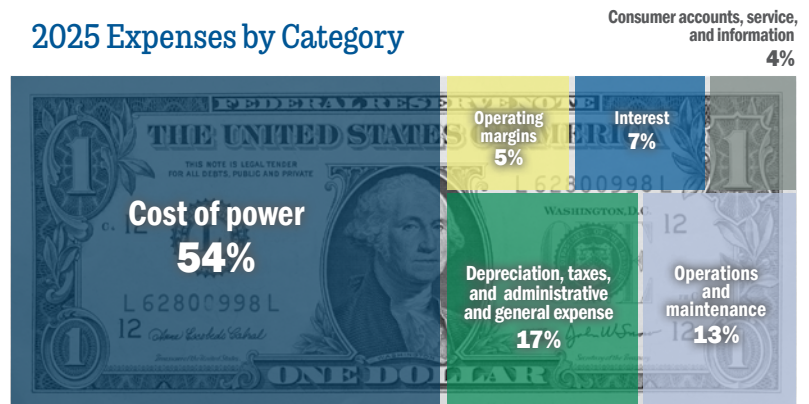
REVENUE.....	2025	2024
Operating Revenue & Patronage Capital.....	\$26,973,559	\$25,734,523
EXPENSE		
Purchased Power	\$14,421,488	\$13,495,724
Distribution Expenses - Operations & Maintenance...	\$3,496,290	\$3,352,530
Customer Accounts & Informational Expense	\$1,055,886	\$1,036,511
Administrative & General Expense	\$1,771,342	\$1,611,213
Depreciation.....	\$2,920,981	\$2,840,973
Interest on Long-Term Debt.....	\$1,924,296	\$1,753,604
Other Deductions & Interest Expense.....	\$13,873	\$60,819
Total Expense	\$25,604,156	\$24,151,374
Operating Margins		
Operating Margins	\$1,369,403	\$1,583,149
Non-Operating Margins.....	\$215,407	\$121,744
Generation & Transmission Capital Credits	\$1,096,348	\$1,125,007
Other Capital Credits & Patronage Dividends.....	\$189,963	\$255,082
Total Operating & Non-Operating Margins.....	\$2,871,121	\$3,084,982

Balance Sheet

ASSETS.....	2025	2024
Current Assets & Other Debits	\$19,546,904	\$16,974,520
Fixed Assets (Net Utility Plant)	\$76,716,221	\$74,719,608
Total Assets & Other Debits	\$96,263,125	\$91,694,128
LIABILITIES		
Total Current & Accrued Liabilities.....	\$4,751,317	\$4,487,836
Total Fixed Long-Term Debt & Deferred Credits.....	\$44,766,493	\$42,656,862
Total Margins & Equities	\$46,745,315	\$44,549,431
Total Liabilities & Other Credits.....	\$96,263,125	\$91,694,128

COOPERATIVE DOLLARS AT WORK FOR YOU

2025 Expenses by Category



\$5.95

The average our residential members spend per day on electricity.

ECI REC IS AMONG IOWA'S LOWEST RATES

for cooperative residential electricity.


COMMUNITY INVESTMENT IN ACTION

Members Help Members Through RECare Program

With support from members like you, our RECare program distributes funds to low-income energy consumers in Benton and Buchanan Counties. Donations help pay these members' heating bills or the cost of winterizing their homes.

In 2025, 53 members donated \$6,252 to RECare. Some donated in one payment, while others had the Cooperative add a few dollars to their electric bills each month. No matter the size or frequency of the donation, it made a difference! We are proud so many of our members are digging into their pockets to help others.

RECare funds are distributed to qualifying members through community action agencies. Donations from our northern service area are administered by Operation Threshold, while donations from our southern service area are administered by the Hawkeye Area Community Action Program (HACAP).

To sign up for RECare or make a one-time donation, call 877-850-4343 or fill out and return the form included here or scan the code to find the form on our website. 



Scan to fill out form online.

YES, I want to contribute to RECare.

- I will make a one-time contribution to RECare.
- I will contribute \$ _____ per month to RECare. (I understand that this amount will be automatically added to my monthly electric bill.)
- My check is enclosed. (Make payable to ECI REC.)

Name: _____

Address: _____

City: _____

State: _____ Zip: _____

Account Number: _____

Email Address: _____

Mail form to:
ECI REC | Billing | PO Box 248 | Urbana, IA 52345-0248

COMMUNITY DONATIONS BREAKDOWN

\$43,770 donated to **37 causes**

\$12,000

(via \$1,000 scholarships) to 12 graduating seniors

\$10,950

to local/county economic development

\$6,500

to health organizations/ food pantries

\$5,269

to Youth Tour

\$4,731

to community organizations

\$4,320

to youth functions



Nominate a local volunteer and they could win \$3,000 for their charity!

Contest entries accepted in June at IowaShineTheLight.com.



Photo credit: Courtesy photo

Photo credits: ECI REC photo library

YOUR BOARD AT WORK

Board Experience and Credentials

Steve Rau, Board President,
21 years of service

Certified Cooperative Director
Board Leadership Certificate
Director Gold Credential

Jeff Elliott, Vice President,
36 years of service

Certified Cooperative Director
Board Leadership Certificate
Director Gold Credential

Julie Kester, Secretary/Treasurer,
7 years of service

Certified Cooperative Director
Board Leadership Certificate

Pete Burmeister, Assistant Secretary/Treasurer,
2 years of service

Gary Cook, Director,
2 years of service

Nick Donlea, Director,
8 years of service

Gary McKenna, Director,
10 years of service

ECI REC Representative on CIPCO
Board of Directors
Certified Cooperative Director
Board Leadership Certificate
Director Gold Credential

Brian McNulty, Director,
5 years of service

5

Steve Rau,
President
Director since 2005
Board District 5



Ilyria (17)
Fayette County

Fremont (24) Fayette County | Harlan (25) Fayette County | Smithfield (26) Fayette County | Fairfield (27) Fayette County | Sperry (28) Clayton County

5

8

Nick Donlea
Director since 2018
Board District 8



Franklin (33) Bremer County | Oran (34) Fayette County | Jefferson (35) Fayette County | Scott (36) Fayette County | Putnam (37) Fayette County | Cass (38) Clayton County

Lester (43) Black Hawk County | Fairbank (44) Buchanan County | Hazleton (45) Buchanan County | Buffalo (46) Buchanan County | Madison (47) Buchanan County | Richland (48) Delaware County

Barclay (53) Black Hawk County | Perry (54) Buchanan County | Washington (55) Buchanan County | Byron (56) Buchanan County | Fremont (57) Buchanan County | Coffins Grove (58) Delaware County

7

Gary Cook,
Director since 2024
Board District 7



1

Jeff Elliott,
Vice President
Director since 1990
Board District 1



Poyner (62) Black Hawk County | Fox (63) Black Hawk County | Westburg (64) Buchanan County | Sumner (65) Buchanan County | Liberty (66) Buchanan County | Middlefield (67) Buchanan County | Prairie (68) Delaware County

Big Creek (72) Black Hawk County | Spring Creek (73) Black Hawk County | Jefferson (74) Buchanan County | Homer (75) Buchanan County | Cono (76) Buchanan County | Newton (77) Buchanan County | Adams (78) Delaware County

6

Pete Burmeister,
Asst. Secretary/
Treasurer
Director since 2024
Board District 6



Geneseo (133) Tama County | Bruce (134) Benton County | Cedar (135) Benton County | Harrison (136) Benton County | Polk (137) Benton County | Grant (138) Linn County

Clark (143) Tama County | Monroe (144) Benton County | Jackson (145) Benton County | Taylor (146) Benton County | Benton (147) Benton County | Washington (148) Linn County

Oneida (153) Tama County | Homer (154) Benton County | Big Grove (155) Benton County | Eden (156) Benton County | Canton (157) Benton County | Fayette (158) Linn County

York (163) Tama County | Kane (164) Benton County | Union (165) Benton County | Eldorado (166) Benton County | Fremont (167) Benton County | Clinton (168) Linn County

Iowa (174) Benton County | Leroy (175) Benton County | St. Clair (176) Benton County | Florence (177) Benton County | Fairfax (178) Linn County

Marengo (185) Iowa County | Washington (186) Iowa County | Lenox (187) Iowa County | Monroe (188) Johnson County

2

Julie Kester,
Secretary/Treasurer
Director since 2019
Board District 2



4

Gary McKenna
Director since 2016
Board District 4



2025 BOARD HIGHLIGHTS

Conducted strategic planning

Spent 294 hours in training

Approved Work Plan

Reviewed 26 policies

Engaged with legislators

Provided financial oversight



ANNUAL MEETING INFORMATION

Meet the Candidates

DISTRICT 1



Jeff Elliott is a longtime farmer in Benton and Black Hawk Counties. He has served on the ECI REC Board of Directors since 1990, bringing decades of cooperative leadership experience and advanced director training credentials.



Matt Werner is a crop farmer near Mount Auburn and a longtime cooperative member who brings experience in agriculture, finance, and community leadership through his service on local boards and organizations.

DISTRICT 5



Steve Rau is a Fayette County farmer who has served on the ECI REC Board of Directors since 2005, bringing years of cooperative leadership and governance training to the role. He is currently serving as Board President.



Janice Martins is a full-time farmer from rural Fairbank with a background in mental health services and strong community involvement through local organizations, emergency services, and agricultural groups.

Full candidate biographies are available in the election mailing and at ecirec.coop.

Voting & Attending the Meeting

How Do I Attend?

Visit ecirec.coop and look for the yellow button at the top of the home page, which will take you to the Annual Meeting of the Members page. Look for the green JOIN NOW button. The virtual meeting room will open at 10:30 a.m.

How Do I Vote?

On **June 1**, ballots will be mailed and online voting will open. There are three ways to vote (see below). All votes—online and mail-in—MUST be received by **June 26**.

- 1 MAIL** - A ballot will be mailed to every member with a self-addressed and stamped return envelope.*
- OR**
- 2 SMART HUB** - Log in to SmartHub at ecirec.smarthub.coop and click VOTE NOW. Please note: SmartHub voting must be done in a web browser, not the SmartHub mobile app.
- OR**
- 3 ONLINE** - Click the VOTE NOW button located on the home page at ecirec.coop. Enter your voter number and election passcode, which will be listed at the bottom of your mailed ballot. Follow online voting instructions.

*ECI REC partnered with Survey & Ballot Systems to administer the 2026 Annual Meeting mailing and ballot validation processes. They will tabulate all the ballots, both paper and online.

Are There Prizes?

Of course! Twelve \$50 bill credits will be given to randomly selected members who vote. Two \$100 bill credits will be given away as grand prizes, with one winner randomly drawn from the members who attend the Annual Meeting and the other drawn from the members who vote.

SCHEDULE

TUESDAY, JUNE 30, 2026

10:30 a.m. – Meeting registration

11:00 a.m. – Business meeting begins

Zoom information can be found at ecirec.coop.

AGENDA

Call to Order

Invocation

Introduction of Directors
Steve Rau, President

Reading of Affidavit of Mailing of Notice of Annual Meeting
Julie Kester, Secretary/Treasurer

Approval of Agenda
Julie Kester, Secretary/Treasurer

Minutes of Last Annual Meeting
Julie Kester, Secretary/Treasurer

Introduction of Attorney
Steve Rau, President

Reading of the Nominating Committee Minutes and Election Results
Amanda James, Attorney

Adjournment of Business Meeting

THE PEOPLE WHO POWER YOUR COOPERATIVE

Electricity Experts, at Your Service!

East-Central Iowa REC's 31 employees have been on the job for a combined 519 years—experience that helps ensure the delivery of safe, reliable power for our communities.

Some employees have served members for more than three decades, while others are just beginning their careers. Together, they form a team committed to our Cooperative's future. ♻️

WE ARE

31 employees with **519** combined years of service

serving members across **11** counties.



URBANA HEADQUARTERS

Photo credit: Teresa Floyd

Front row (left to right): Nathan Groom, Tom Schmitt, Robert Derifield, Adam Albertsen, Scott McLaughlin. Back row (left to right): Tanya Ellis, Robin Moore, Katie Stadheim, Molly Cook, Jennifer Schmitz, Holly Cashman, Aliza Mollenhauer, Pat Hyland.



VINTON OPERATIONS

Photo credit: Katie Stadheim

Left to right: Scott Rast, Bryce Burroughs, Kevin Walton, Braxton Clubb, Dane Peterson, Trent Koopmann, Josh Cox, Brooks Erickson, Doug Appelgate

Left to right, below: Travis Schellhorn, Colton Wolfe, Brian Reidy, Andrew McGuire, Jared Grover, Ben Donnelly, Colton Dietrick, Mike Adams



INDEPENDENCE OPERATIONS

Photo credit: Katie Stadheim