

heartland LINK

A publication of East-Central Iowa Rural Electric Cooperative

YOUTH CELEBRATED page 4

ECI REC members' children chosen for scholarships and Youth Tour.

GET TO KNOW ELECTRIC HEAT PUMPS page 7

The most efficient way to heat and cool your home.



ANNUAL MEETING PREVIEW page 10

Speaker and Director candidates announced.

NOMINATING COMMITTEE page 11

Thank you for your work!



High River Conditions and Ice Thaws Impact ECI REC

Story on page 3

photo by Pat Hyland



A Touchstone Energy® Cooperative

**03 UP-TO-THE-MINUTE
OUTAGE INFO****03 HOW WE RESTORE POWER****04 CELEBRATING OUR YOUTH**

Meet our scholarship winners and Youth Tour delegates.

05 OUTDOOR SAFETY TIPS**05 MAY IS ELECTRICAL
SAFETY MONTH****05 CO-OP CONNECTIONS®
CARD BUSINESSES****06 REC DAY ON THE HILL**

Annual event connects cooperatives and lawmakers.

06 SAFETY TRAINING**06 ON-SITE GENERATION**

Law requires notification before construction begins.

07 ALBERTSEN HONORED

Member Services Director earns professional certificate.

07 GET TO KNOW HEAT PUMPS

The most energy-efficient home heating and cooling option.

08 DETERRING COPPER THEFT**08 ANNUAL AUDIT & FINANCIALS****09 2018 HIGHLIGHTS**

Celebration planned for annual meeting.

10 ANNUAL MEETING PREVIEW**11 NOMINATION COMMITTEE****02 ENERGY-EFFICIENCY TIP****11 BOARD OF DIRECTORS****12 CEO MESSAGE**

Energy Efficiency Tip of the Month

Avoid placing items like lamps and televisions near your air-conditioning thermostat. The thermostat senses heat from these appliances, which can cause the A/C to run longer than necessary.

Source: energy.gov



take the member challenge

1. **KEEPING THE LIGHTS ON:** When ____ or more outages occur, the map is populated and is automatically updated every minute.
2. **SAFETY:** Consult with an electrician before operating any electrical equipment or _____ that have come into contact with flood water.
3. **ENERGY WISE:** An _____ heat pump serves a dual purpose—it functions as your home's primary heating and cooling system.

Find the answers within the stories, features, and content of this newsletter and you could win a prize. Send your answers to memberchallenge@ecirec.coop. Or, print the word(s) at the top of the back page, cut it out, and send it to: ECI REC, PO Box 248, Urbana, IA 52345. You may mail your entry along with your electric bill payment, but remember there is a deadline! Entries for this issue must be received by June 1. Sixteen names will be drawn from all correct entries. Members will not be allowed to win more than once per calendar year.

last issue's challenge winners

The following names were drawn from the March/April 2019 *Heartland Link* entries. These members will receive a \$10 credit on their account.

Sandy Johnston

Marvin Dostal

Roger Bahr

Randy Scheel

John Rhinehart

Elmer Spencer

Darwin Funk

Lucille Yedlik

Mary Stephens

Ryan Svoboda

Nyle Vargason

Rebecca Shannon

Greg Vandevoorde

Kenneth Everett

Robert Turner

Porcia Grover

Calendar Notes

5/27 – Closed for Memorial Day

6/20 – Annual Meeting

Contact ECI REC

EMAILS

memberservices@ecirec.coop
(rebates, product sales)

csr@ecirec.coop
(billing, new customers)

WEB SITE
www.ecirec.coop

MANAGEMENT TEAM

Steve Marlow
Chief Executive Officer
Ext. 421
steve.marlow@ecirec.coop

Teresa Floyd
Manager of Finance and Consumer Service
Ext. 450
teresa.floyd@ecirec.coop

Tom Schmitt
Line Superintendent
Ext. 519
tom.schmitt@ecirec.coop

Adam Albertsen
Director of Member Service
Ext. 503
adam.albertsen@ecirec.coop

Lisa Franck
Manager of Communications
Ext. 472
lisa.franck@ecirec.coop

Nathan Groom
Information System Administrator
Ext. 410
nathan.groom@ecirec.coop

ADDRESS
2400 Bing Miller Lane
PO Box 248
Urbana, IA 52345-0248

PHONE
319-443-4343

TOLL FREE
877-850-4343

FAX 319-443-4359

HOURS

Monday-Friday
Office: 7:30 a.m. to 4:00 p.m.

(closed Saturdays, Sundays, and holidays)

 **OPERATIONS NEWS
OUTAGE UPDATES**

facebook.com/eastcentraliowarec

High River Conditions and Ice Thaws Impact ECI REC

a *Keeping the Lights On* article

THE ECI REC DISTRIBUTION SYSTEM services a number of member accounts along both the Cedar and Wapsipinicon Rivers. This year, rains and ice thaws happened together, leading to swollen rivers and issues for members and our distribution system.

One issue occurred when a chunk of ice hit and snapped off an ECI REC distribution pole along the Cedar River in Benton County. An ECI REC member reported the situation. Engineering Design Technician Pat Hyland worked this after-hours call and found that although the distribution pole and lines ended up in the river, there was no outage and the equipment remained energized.

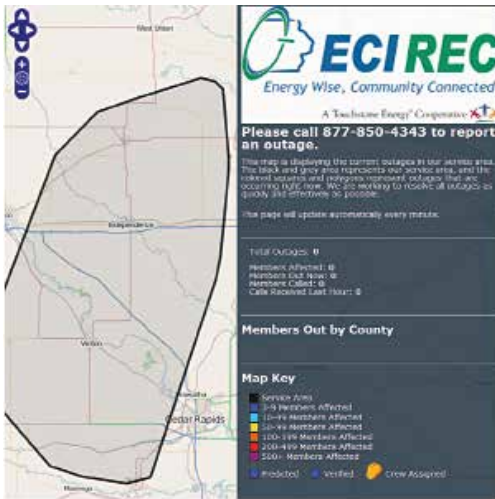
The line was temporarily cinched up and was then safely secured. When conditions allow, the equipment will be updated.

"We are very appreciative that this member called about

the damaged equipment, for this obviously created an unsafe and potentially fatal environment," said CEO Steve Marlow. "Downed lines are always to be considered energized and dangerous. In a situation like this, the combination of electricity and water raises the stakes for an even more hazardous situation."

The Wapsipinicon River also created more challenging after-hours working conditions for line personnel Jared Grover and Dave Henkes in March. ECI REC member Phyllis Fuller experienced an outage in the midst of flood conditions around her Buchanan County home. The duo waded through icy, waist-high water to get Fuller re-energized.

"A big THANK YOU to ECI REC for getting me reconnected last night! I am so thankful, and I want someone to give them a BIG HUG AND KISS. My husband was a lineworker, so I know what it entails," Fuller stated in an email to the Cooperative. 🌱



Up-to-the-Minute Outage Info Available Online

a *Keeping the Lights On* reminder

WHEN A STORM OR EQUIPMENT issue leaves you in the dark, you want to know what progress we are making toward resolving the issue. We've got you covered with our online Outage Map, available on the home page of our website and via your SmartHub bill payment app on your smartphone.

This near-real-time outage map is integrated with our member-accounts and shows a bird's-eye view of ECI REC's service territory. When three or more outages occur, the map is populated and is automatically updated every minute. Members can zoom in within a half-mile radius. A key shows how many members are affected by an outage, if it was predicted, if it has been verified, and if crews have been dispatched to address the outage. A call log shows the number of members who have contacted us regarding an outage at hand. 🌱

You're Not Alone in the Dark

When a power outage happens, ECI REC springs into action. Here's the process we follow to ensure power is restored quickly and safely. It all starts with identifying what distribution equipment in what location has been damaged or is experiencing an interruption.



Occasionally during a major storm, transmission towers are damaged. Repairing these is the responsibility of our power supplier and is top priority.



High-voltage transmission stations power ECI REC's 25 distribution substations. If the issue is isolated and can be resolved here, thousands of members get their power restored at once.



Next, crews inspect distribution lines between substations and the meters they serve. If the distribution lines can be repaired, power can be restored to the meters on those lines.



If your lights are out but your neighbors' are blazing, call ECI REC at 877-850-4343 right away so we can send a line crew to your home.

Scan to watch a video from the National Rural Electric Cooperative Association explaining the steps co-ops go through to restore power.

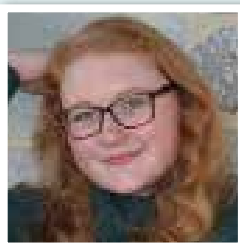


YOUTH TOUR DELEGATES SCHOLARSHIP WINNERS

2019 Scholarship Winners: East-Central Iowa REC is proud to announce it has awarded \$1,000 scholarships to ten graduating seniors who plan to further their education in a diverse range of programs. Congratulations to these deserving students!



Brandon Becker
Starmont High School
Parents: Janet & Matt
Becker of Dundee
UNIVERSITY OF
WISCONSIN-MILWAUKEE



Sarah Collison
East Buchanan
High School
Parents: Ron & Pam
Collison of Rowley
IOWA STATE UNIVERSITY



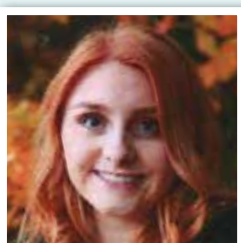
Emmet Cummings
Center Point-Urbana
High School
Parent: Halane
Cummings of Center Point
UNIVERSITY OF
NORTHERN IOWA



Hannah Gates
Union High School
Parent: Jennifer Gates
of LaPorte City
IOWA STATE
UNIVERSITY



Allyson Hearn
Independence High School
Parent: Melissa Hearn
of Independence
UNIVERSITY OF
NORTHERN IOWA



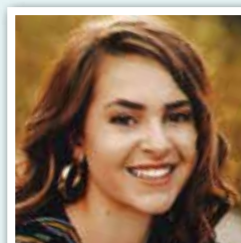
Lydia Martins
Wapsie Valley
High School
Parent: Janice Martins
of Fairbank
IOWA STATE UNIVERSITY



Brock Ortner
Vinton-Shellsburg
High School
Parents: Michael & Laurie
Ortner of Shellsburg
UNIVERSITY OF IOWA



Benjamin Reams
Dunkerton High School
Parent: Sara Reams of
Dunkerton
HAWKEYE COMMUNITY
COLLEGE



Madelyn Schadle
Benton Community
High School
Parents: Scott & Amy
Schadle of Watkins
IOWA STATE UNIVERSITY



Logan Williams
North Linn High School
Parent: Daryl Williams of
Walker
UNIVERSITY OF IOWA



2019 Youth Tour Delegates: Two high school juniors from ECI REC's service area have been selected to join nearly 40 other Iowa students for a trip to Washington, D.C., for the annual NRECA Youth Tour. Youth Tour delegates gain a first-hand understanding of the legislative process, visit our capital's museums and monuments, learn about advocating on behalf of their communities, and make connections that will last a lifetime. For more information, visit www.youthtour.coop.

Jacob Ludeking attends Benton Community High School and is the son of George and Theresa Ludeking of Norway. Jacob is an honor roll student. His school activities include speech, band, show choir, musicals, and plays. He is an Iowa Ambassador of Music and serves as reporter of the Benton Community FFA Chapter. Jacob's activities outside school include 4-H Club, FFA, and teaching at his church.

Kaylee Kleitsch attends Wapsie Valley High School and is the daughter of Richard and Brenda Kleitsch of Fairbank. Kaylee is an honor roll student. Her school activities include archery, the Talented and Gifted Program (TAG), choir, musicals, and FFA. She is also a student ambassador and teacher's assistant. Outside school, Kaylee enjoys being a member of her 4-H Club, volunteering at the library, babysitting, house- and pet-sitting, and teaching Bible school.



5 OUTDOOR ELECTRICAL HAZARDS



1. Power Lines – Always look up and out for power lines. Keep you and your equipment at least 10 feet away from power lines.

2. Outdoor outlets – These should be powered by a ground fault circuit interrupter (GFCI), which turns itself off if it senses a current leak or a short circuit.



3. Pools – Use battery-powered electronics around the pool. Have an electrician inspect your pool, spa or hot tub before the beginning of each swim season to avoid electrical hazards.

4.

Extension Cords – Use extension cords that are rated for outdoor use. Using an indoor cord, which cannot withstand the weather conditions, could result in a shock or fire hazard.



5.

Electric Garden Tools – Never use electric garden tools in wet or damp conditions. Check for cracked or frayed cords before use and replace if damaged.



Learn more at SafeElectricity.org

Co-op Connections Program Puts Value in Your Wallet

Use your Co-op Connections® Card online and at the participating businesses below and discover the value of being a co-op member at ECI REC!

DYSART

Emmy Lou Candles
Polar Blair's Den

INDEPENDENCE

Bill's Pizza & Smokehouse
Cy & Charley's Tire & Appliances
E & T NAPA Auto Parts
Fabulous Fridays
Heartland Acres Agribition Center
In The Country Garden & Gifts
Office Towne, Inc.
Okoboji Grill
Styles Unlimited

VINTON

Berry's Lanes, Inc.
Cameron Clothing Company
Clingman Pharmacy, Inc.
Frazier Nursery
Henkle Creek Mercantile
Michael & Dowd
Subway
Viking Sewing Center

WINTHROP

The NEWS/Buchanan County Review

MAY IS NATIONAL ELECTRICAL SAFETY MONTH

This year's theme is **Electrical Safety During Natural Disasters**, and content discusses the importance of preparing for, weathering, and rebuilding after natural disasters.

SAFETY TIP: Consult with an electrician before operating any electrical equipment or appliances that have come into contact with flood water.

#ElectricalSafetyMonth

Co-op Connections® Card



No need to carry the card everywhere you go! Download the mobile app to use your card via your smartphone.



photo by LAEC

ECI REC Advocates Attend REC Day on the Hill

a Looking Out For You story

ON MARCH 14, more than 200 employees and directors, representing 36 of Iowa's rural electric cooperatives (RECs), traveled to the Iowa State Capitol to advocate for important issues during our annual REC Day on the Hill event. ECI REC advocates attend the annual REC Day on the Hill to meet with local legislators during a dessert social in the Capitol.

"This annual visit to the Iowa Capitol is an excellent opportunity to personally visit with our elected officials and provide them with a co-op perspective on issues that are important to rural Iowa and rural economic development," remarked Steve Seidl, Board President of the Iowa Association of Electric Cooperatives.

Advocates educated legislators on the benefits of the cooperative business model, including local ownership,

cost-based rates, and democratic governance. Legislators also learned about priorities important to Iowa's electric cooperatives, including:

- » Ensuring safety and reliability of service through vegetation management
- » Supporting cost-effective energy efficiency programs for homes and farms
- » Responsible power generation and delivery through fair treatment of all member-owners and utilization of advanced technology

Many electric cooperatives also displayed booths in the rotunda that provided information on topics like energy efficiency programs, rural broadband efforts, investments in technology, and rural economic development. [🔗](#)

March Safety Training *a Safety story*

Safety is an important part of ECI REC's business. Monthly safety meetings are held to review and train on various safety topics. In March, all 33 ECI REC employees completed the CPR, First Aid, bloodborne pathogens, and AED (defibrillator) training. Safety personnel from the Iowa Association of Electric Cooperatives, John Dvorak and Matt Pociask, led the event. [🔗](#)



6 May/June 2019 Heartland Link

Installing On-Site Generation? Know the Legal Requirements

a Safety reminder

FOR YOUR SAFETY AND OURS, owners of alternative energy production facilities that will be attached to an electric transmission or distribution line are required to provide written notification to their utility.

- » You must provide notification of the intent to construct or install the facility at least 30 days prior to construction.
- » The law applies to any size facility (solar-powered heat pumps, for example).
- » In the written notice, you must provide information on the type of facility and the anticipated completion date of the construction.
- » Alternative energy production facilities are defined as solar, wind turbine, waste management, resource recovery, refuse-derived fuel, agricultural crops or residues, or wood-burning facilities used to generate electricity.

If you have questions about the law or about interconnecting alternative energy facilities in general, please contact ECI REC at 877-850-4343. [🔗](#)

Albertsen Receives National Recognition

a Cooperative Difference announcement



RECENTLY, EAST-CENTRAL IOWA REC'S Director of Member Service Adam Albertsen earned recognition as a professional key accounts manager in a nationwide program offered by the National Rural Electric Cooperative Association (NRECA).

"We want to thank Adam for his initiative in completing the program successfully and meeting the requirements to become a Certified Key Accounts Executive (CKAE)," said Steve Marlow, CEO of ECI REC. "Congratulations, Adam!"

In order to earn the certificate, Albertsen completed coursework, passed an exam, and submitted business and marketing plans for evaluation. His written plans were judged by an outside business professional for content and strategic acumen.

The CKAE certificate program improves service to commercial and industrial member-accounts—CKAE professionals are adept at establishing business goals, identifying key-account profiles, practicing professional sales management, and applying sound decision-making processes. Since 1998, when the voluntary program began, over 400 rural electric marketing professionals have attained CKAE status. 🌱



Heat Pumps: The Most Efficient Way to Heat and Cool Your Home

an Energy Wise article

AN ELECTRIC HEAT PUMP is the most energy-efficient home heating and cooling option available today, providing heating equal to three times the amount of electricity consumed. An electric heat pump system can significantly improve your home's energy efficiency, reduce your energy consumption, and help you save money on your utilities.

An electric heat pump serves a dual purpose—it functions as your home's primary heating and cooling system. There are two types of electric heat pumps to consider:

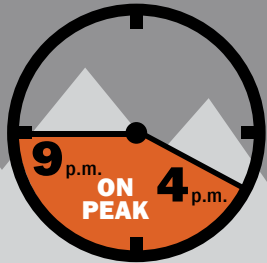
- » Air-source heat pumps work by transferring heat between the inside of your house and the outside air. Whether you're upgrading to something more efficient or replacing a worn-out furnace or air conditioner, you'll find that air-source heat pumps are an economical choice that provide year-round savings.
- » Geothermal heat pumps take advantage of the earth's constant temperature by circulating a water-based solution through pipes buried in the ground. This method of heating and cooling your home is environmentally friendly, reliable, quiet, comfortable, and cost effective; it is also the most energy-efficient solution available. There are significant tax credits available for installing geothermal systems.

ENJOY THE BENEFITS OF GOING ELECTRIC

The cost of heating represents nearly half your home's total energy consumption. Upgrade to an electric heat pump and you'll improve your energy efficiency—and enjoy a variety of other benefits:

- » **Stay comfortable all year long.** Enjoy stable, reliable heating and cooling year-round. You save energy, while leaving the thermostat right where your family likes it.
- » **Heat your home safely.** Rest easy knowing your heat pump produces no harmful emissions.
- » **Save money.** Reduce utility bills by lowering the amount of electricity you use to heat your home up to 40%. You are also eligible for immediate rebates on qualifying equipment. 🌱

TAKE A LOAD OFF THE PEAK



THIS YEAR Resolve to Curb Energy Use During Peak Hours

Peak hours are the busiest times for your local electric cooperative since many people are using electricity at the same time. In addition, it costs your co-op more to generate electricity when demand soars during peak periods—and the cost of your electricity may also rise. Obviously, using less electricity during peak periods can save your co-op—and you—money.

Here's how you can help during peak hours, which generally are on the coldest winter days between 4:00 p.m. and 9:00 p.m.

- » Shift household chores and activities away from peak periods. Wait to run your dishwasher until you go to bed, for instance.
- » Use the most energy-efficient appliances you have. Your microwave oven, for example, uses considerably less energy than your stove or cook-top.
- » If you're buying a new appliance, make sure you get a highly efficient one. Look for ENERGY STAR® labels when you're evaluating different models.
- » Be aware of your energy consumption and try to get in the habit of using energy efficiently year-round.

YOU CAN HELP PREVENT COPPER THEFT!

Report any suspicious activity
you see at or around
utility equipment!




Cooperatives Work to Deter Copper Theft *a Safety feature*

COPPER THEFTS from electric cooperatives are serious crimes. These thefts can cause power surges, outages, fires, explosions, and injuries to co-op workers or innocent people coming into contact with tampered equipment. In addition, post-theft repairs can run into the tens of thousands of dollars, which must be covered by the affected co-ops and their members.

ECI REC has teamed up with Crime Stoppers to create a special toll-free phone line: **800-452-1111**. Co-op members and other citizens can use it to report suspicious activities at one of the cooperative's substations—or around other equipment, such as a transformer, power pole, or even a meter at a residence, farm, or business. Once a tip is received, Crime Stoppers will contact the local sheriff or other designated law enforcement agency about the possible crime. After the caller has seen or heard on the local news that a crime has been solved, he or she can call Crime Stoppers to receive instructions for claiming a cash reward up to \$1,000, although most rewards range from \$20-\$200. The caller's identity and other information will remain anonymous.

Several years ago, ECI REC also supported a law to deter scrap metal theft, which makes finding a market for stolen copper less likely. The law requires scrap metal dealers to obtain a name, address, place of business, and proper identification before purchasing scrap metal from any individual. This requirement applies to all purchases over \$50 and creates a record for law enforcement to track sales of scrap metal. The penalty for noncompliance is \$100 for the first offense, \$500 for second offense, and \$1,000 for third offense within a two-year period.

"Copper theft poses a serious safety issue that also drives up costs for our members," said ECI REC CEO Steve Marlow. "We take every precaution to deter would-be thieves from compromising our electric system, and the new Crime Stoppers line and the Iowa metal-theft law give us more tools to help track and catch thieves." 

ECI REC Undergoes Annual Financial Audit *a Looking Out for You update*

CliftonLarsonAllen LLP recently conducted ECI REC's 2018 financial audit. The audit went very well. Due to thorough preliminary work, the on-site audit was completed within two days. "We were very pleased with how smoothly and efficiently the process went," said CEO Steve Marlow.

STATEMENT OF REVENUE AND EXPENSE

REVENUE	2018	2017
Operating Revenue and Patronage Capital.....	\$22,348,986	\$22,099,544
EXPENSE		
Purchased Power	\$12,989,015	\$12,943,346
Distribution Expenses - Operations	\$1,971,244	\$1,853,939
Distribution Expenses - Maintenance.....	\$620,343	\$534,393
Customer Accounts Expense	\$476,395	\$497,529
Customer Service & Informational Expense	\$315,971	\$314,528
Administrative & General Expense	\$1,257,819	\$1,296,467
Depreciation.....	\$2,158,554	\$1,867,469
Taxes - Property & Other	\$22,302	\$22,093
Interest on Long-Term Debt.....	\$1,138,712	\$1,015,599
Other Deductions & Interest Expense.....	\$55,184	\$52,506
TOTAL EXPENSE.....	\$21,005,537	\$20,397,869
Operating Margins	\$1,343,448	\$1,701,675
Non-Operating Margins.....	\$76,350	\$ (779,772)
Generation & Transmission Capital Credits.....	\$764,908	\$1,014,757
Other Capital Credits & Patronage Dividends	\$168,844	\$163,188
Total Operating & Non-Operating Margins.....	\$2,353,549	\$2,099,848

BALANCE SHEET

ASSETS	2018	2017
Current Assets & Other Debits.....	\$12,739,614	\$13,653,313
Fixed Assets (Net Utility Plant)	\$56,550,065	\$50,531,042
Total Assets & Other Debits	\$69,289,679	\$64,184,355
LIABILITIES		
Total Current & Accrued Liabilities.....	\$3,620,433	\$4,070,454
Total Fixed Long-Term Debt & Deferred Credits.....	\$31,218,430	\$27,323,993
Total Margins & Equities	\$34,450,816	\$32,789,908
Total Liabilities & Other Credits	\$69,289,679	\$64,184,355

COMPARATIVE OPERATING STATISTICS

Miles of Line Energized	2,281	2,279
New Services Connected.....	177	109
Total Services in Place.....	9,563	9,442
kWh's Purchased From CIPCO	227,601,806	218,367,811
Cost Power Purchased	\$12,971,319	\$12,922,574
Percent Line Loss.....	4.0%	4.85%
OPERATING REVENUE	\$22,301,795	\$22,059,925
Average kWh's Used per Month per Consumer	2,052	1,981
Average Monthly Bill.....	\$210.38	\$210.19
Average Cost per kWh to Consumer	\$0.1025	\$0.1061

LOAN FUNDS

CFC	\$30,151,233	\$26,439,038
Other.....	\$400,000	\$400,000
Total Loan Funds.....	\$30,551,233	\$26,839,038



2018 Highlights to Be Celebrated at the Annual Meeting

BUILDING BEYOND THE LINES

a Cooperative Difference article



IN 2018, EAST-CENTRAL IOWA REC continued to navigate our Cooperative through a time of change in the energy industry. With an eye on the future, we worked to build on current and new technologies, going beyond lines and poles to improve quality of life for our membership and the communities we serve.

Our mission is to demonstrate the advantage of the cooperative business model. Not only do we keep the seven cooperative principles at the forefront—we find innovative ways to deliver safe, affordable, and reliable electricity in an environmentally friendly manner. Our dedicated team provides value-added service and strives each day to implement sustainable solutions that are in the best interests of the Cooperative, our membership, and our communities. Here are some highlights from our last fiscal year:

KEEPING THE LIGHTS ON

- » In 2018, we completed our Advanced Metering Infrastructure (AMI) initiative. With assistance from Chapman Metering, 10,734 AMI meters were installed on 8,811 member-accounts, including HeatPlus accounts.
- » As part of the Construction Work Plan, 80 miles of overhead and underground line were replaced. In the Fairbank and Garrison substation areas, crews inspected 4,328 poles. As of year-end, 18 of ECI REC's 25 substations have been upgraded with higher voltage capacity and/or with electronic reclosers.
- » 2018 tallied the second fewest outage minutes per member in the history of ECI REC, coming in at an average of 52 minutes/member-account for the entire year.

LOOKING OUT FOR YOU

- » In 2018, ECI REC staff and Board members were actively engaged in legislative events across the state. We carried messages to lawmakers supporting investment in renewable energy, workforce readiness in technical trades, safety and reliability, and vegetation management.
- » We are excited about two major legislative successes:
 - Federal geothermal tax credits were reinstated retroactively through 2021.
 - The Iowa Energy Omnibus Bill provides regulatory parity and clarity; ensures members' dollars are invested in only worthwhile energy efficiency; and eliminates duplicative reporting to the Iowa Utilities Board.

THE COOPERATIVE DIFFERENCE

- » Members approved a plan to decrease the number of Cooperative Directors from 10 to 8. The service territory no longer has a southern and northern district. It is treated as one entity.
- » At its May Board meeting, the ECI REC Board of Directors approved the retirement of \$616,993—100% of 2003, 9.76% of 2015, and 5.49% of 2016 margins. In the past 10 years, ECI REC has returned \$5,427,553 to its members.
- » Board Directors Jim Alberts, Jeff Elliott, Steve Rau, and Don Shonka renewed their Director Gold Certificate. Director Chris Sackett earned his Board Leadership Program Certificate.
- » Kilowatt-hour sales for 2018 were 4.3% greater than budgeted and 4.6% greater than sales in 2017.

POWER SUPPLIER ANNOUNCEMENTS

CIPCO + Clēnera =
Midwest's largest solar project



WAPELLO
SOLAR
100 MEGAWATTS

LOUISA
COUNTY, IA



Repowering to meet your needs

CRESTON, IA



\$85 million
Summit Lake
Generating Station
NATURAL GAS



60 MEGAWATTS

ENERGY WISE

- » CIPCO's Heartland Divide Wind project—a 104 MW wind farm located in Audubon, Iowa—came online in December.
- » CIPCO and its member systems, including ECI REC, issued over \$2.7 million in energy-efficiency rebates that saved approximately 28.6 million kWh of energy. That includes 1,757,616 kWh savings for our members.
- » In 2018, 1.38% of our revenue was invested in energy-efficiency programs.
- » In August, ECI REC members Ryan and Kaidy Rasmussen hosted over 100 guests at their all-electric, energy-efficient home south of Independence.
- » In 2018, 86 ECI REC members contributed an average of \$3.93/

continued on page 10

BUILDING BEYOND THE LINES

2019 Annual Meeting Preview

a Cooperative Difference feature

THE 2019 ANNUAL MEETING of the Members of East-Central Iowa REC is just around the corner! This year, we're excited to welcome Central Iowa Power Cooperative's CEO and Executive Vice President Bill Cherrier. Cherrier will present on CIPCO's plans for Iowa's largest solar project.

Our 2018 Youth Tour representatives, Brock Ortnor and Sarah Collison, will also be on hand to share their experiences from their trip to D.C. last June. Attendees will receive a registration gift and a catered noon meal and have a chance to win a \$50.00 gift card.

And perhaps most importantly, the Annual Meeting is also the occasion to exercise one of the greatest benefits of being an electric cooperative member: voting for the upcoming year's Board of Directors. Remember, ECI REC is not owned by faraway investors, and it is not run by an appointed Board of Directors. Your Cooperative is run by a democratically elected Board that is granted the privilege to serve because of your vote.

From all your friends at ECI REC, we hope to see you in June at the Annual Meeting! 🌱

					Polk (137) 2
			Taylor (146) 4	Benton (147)	Washington (148)
	Homer (154)		Eden (156)	Canton (157)	Fayette (158)
York (163)	Kane (164)	Union (165)	Eldorado (166)	Fremont (167)	Clinton (168)
	Iowa (174)	Leroy (175)	St. Clair (176) 3	Florence (177)	Fairfax (178)
		Marengo (185)	Washington (186)	Lenox (187)	Monroe (188)

Annual Meeting of the Members

Thursday, June 20, 2019

Vinton-Shellsburg High School

Registration: 10:30 a.m.

Business meeting: 11:00 a.m.

Director Positions Up for Reelection

Board District #2

Running: Julie Kester, Walker

Running: Scott Hepker, Vinton

Board District #3

Incumbent: Allen Albers, Keystone

Opposed by: Gary Paulsen, Newhall

Board District #4

Running Unopposed: Gary McKenna, Vinton

2018 Highlights continued from page 9

month each to support production of renewable energy in Iowa. Member support for the year totaled \$4,163.50.

- » ECI REC partnered with nine other electric cooperatives to form a for-profit company, Iowa Choice Renewables. ICR offers turnkey solar systems that can be sized, purchased, installed, and connected to the power grid.

COMMUNITY CONNECTED

- » ECI REC awarded \$1,000 scholarships to ten graduating seniors. Juniors Sarah Collison and Brock Ortnor represented ECI REC's service territory at the 2018 Electric Cooperative Youth Tour in Washington, D.C.
- » In 2018, ECI REC staff spoke at the annual Career Fair Day at East Buchanan High School in Winthrop and the Career Day held at Independence West Elementary

School, highlighting working in the electric industry.

- » From July 2017 to June 2018, 67 members contributed \$4,985 to our RECare program.
- » In 2018, ECI REC gave more than \$35,000 to 21 community organizations.

SAFETY

- » Representatives from Iowa's electric cooperatives, including ECI REC, joined Governor Reynolds for the signing of a proclamation declaring August 10 Move Over Iowa Day to help raise awareness about Iowa's Move Over or Slow Down law. The law requires drivers to slow down for vehicles on the side of the road with flashing lights, including utility vehicles.
- » In 2018, ECI REC earned the NRECA Safety Certificate. 🌱

ECI REC employees work hard to host this event, and we encourage you to attend and exercise some of the many rights you have as a member of an electric cooperative. We know the food, prizes, and presentations are the best parts of the meeting, but there is so much more.

Did you know the Annual Meeting is about the issues affecting our community? For example, Iowa cooperatives take an active role in communicating with legislators about issues that impact how much our members pay for electricity. The Annual Meeting gives you the opportunity to share your concerns about affordable electricity with ECI REC leaders, who can carry those concerns to legislators.

At the Annual Meeting, you

also exercise one of the greatest benefits of being an electric cooperative member: voting for the upcoming year's Board of Directors (see page 10). ECI REC is not owned by faraway investors, and it is not run by an appointed Board of Directors. Your Cooperative is run by a democratically elected Board that has the privilege to serve because of your vote.

So at this year's Annual Meeting, not only will you be informed about ECI REC (and maybe win a prize!), you will feel good knowing you had a voice in a very important decision that impacts one of our most vital resources—electricity.

From all your friends at ECI REC, we hope to see you in June at the Annual Meeting. 🌱

Nominating Committee Serves Our Cooperative

The ECI REC Board of Directors selected a member from their individual board district to serve on the Nominating Committee. The committee nominates one to two East-Central Iowa REC members from Director Districts with positions up for reelection. These candidates are placed on the ballot and are voted on at the upcoming Annual Meeting of the Members. Thank you to the Nominating Committee for supporting our democratic governance! 🌱



Nomination Committee Members, pictured, left to right: Michael Silhanek (Director District 3), David Inman (Director District 4), Richard Booth (Director District 6), David Peck (Director District 10), Peggy Bearbower (Director District 2), Dan Sperflage (Director District 9). Absent: Bob Hanson (Director District 1) and Randy Merkel (Director District 8).

YOUR BOARD



Board District 1 - Jeff Elliott
(2018/2019 Vice President)

Board District 2 - Chris Sackett
(2018/2019 Asst. Secretary/Treasurer)

Board District 3 - Allen Albers

Board District 4 - Gary McKenna

Board District 5 - Burt Byers

Board District 6 - Don Shonka

Board District 7 - Jim Alberts

Board District 8 - Nick Donlea

Board District 9 - Steve Rau
(2018/2019 President)

Board District 10 - Ryan Kress
(2018/2019 Secretary/Treasurer)

CLASSIFIEDS: Free to members only

FOR SALE: Brand-new, full-size mattress, firm with pillow-top, box spring, frame, and all the bedding, \$250. PH: 319-654-4151

FOR SALE: 2004 Dodge Ram, 1500 ST/SLT, quad cab, 130,00 miles, silver, clean, \$7,500 OBO. Call after 6 p.m. PH: 319-929-3336

FOR SALE: 2009, 16', extra-wide-deep, Alumacraft, square-front jon boat with 2009 9.9 Pro Kicker Mercury motor, Minn Kota trolling motor, paddles, 2 anchors, cover, livewell, bumpers, 2009 ShoreLand'r trailer. Always stored, \$2,800 (less than half of new prices). PH: 319-610-7352

FOR SALE: John Deere 336 small square baler, \$5,000. PH: 319-472-5025

FOR SALE: Sun Mar Excel compost toilet, electric heater, top of the line, excellent condition. Asking \$900 (retails for \$2,000). PH: 602-448-5066

Please email your ad to classifieds@ecirec.coop. Ads for the July/August Heartland Link must be received by June 1, 2019.

East-Central Iowa REC will publish non-commercial advertisements as a service to our members. All ads are free. They may be submitted by any member or employee of East-Central Iowa REC. Ads should contain a phone number, name (if desired), a brief description of items with price if applicable. Each ad is limited to maximum of 50 words; please type or print clearly. Editor reserves the right to edit or reject any ad. No ads will be taken over the telephone—please email, mail, or bring your ad to the office.

Heartland Link (USPS No. 313-160) is published bimonthly for \$3.30 per year by East-Central Iowa Rural Electric Cooperative, 2400 Bing Miller Ln., Urbana, IA 52345-0248 with outposts located at 1707 First St. E. Independence, IA 50644 and 1600 West D. St., Vinton, IA 52349. Periodicals class postage paid at Independence, IA, and additional mailing offices.

POSTMASTER: Send address changes to Heartland Link, 2400 Bing Miller Lane, PO Box 248, Urbana, IA 52345.

Phone: (319) 443-4343

Ownership: East-Central Iowa Rural Electric Cooperative

Publisher: Steve Marlow

Editor: Lisa Franck

East-Central Iowa Rural Electric Cooperative is an equal opportunity provider, employer, and lender.

CLIP AND MAIL

See page 2 for the Member Challenge questions.

Answers: 1. _____ 2. _____ 3. _____

Please note: NO ANSWERS will be taken over the phone.

Members get connected at www.ecirec.coop



24-Hour Bill Pay With SmartHub

See account information at ecirec.coop or download the app.



Outage Center & Map

View current outages via SmartHub or at outages.ecirec.coop:81.



Online Forms

Access rebate, service request, and program sign-up forms.



Call Before You Dig

Notify utilities before you dig at www.iowaonecall.com or call 811.



Facebook

Find news and updates at facebook.com/eastcentraliowarec.



Co-op Connections®

Get discounts on everyday expenses. Visit www.connections.coop or download the mobile app.



Heartland Link E-Newsletter

Email ecirec@ecirec.coop and ask to receive our newsletter via email.



FREE Monthly Energy Tips

Sign up at www.myenergytips.com to get the Watts \$mart e-newsletter.



Iowa Rural Power

Join grassroots advocates for Iowa's electric cooperatives. Visit www.iaruralpower.org.



Message From CEO Steve Marlow

Join Fellow ECI REC Members at the 2019 Annual Meeting

IT'S THAT TIME OF YEAR AGAIN! East-Central Iowa REC is gearing up for the 2019 Annual Meeting of the Members, which will be held on Thursday, June 20, at Vinton-Shellsburg High School in Vinton. Registration begins at 10:30 a.m., and the business meeting starts at 11:00.

The Annual Meeting is a special time for Cooperative members to gather, share experiences, hear from Cooperative leadership, and—perhaps most importantly—elect new Board members. At this year's meeting, Central Iowa Power Cooperative CEO and Executive Vice President Bill Cherrier will present on Wapello Solar, Iowa's largest solar project. The 2018 Youth Tour representatives will also be in attendance to talk about their trip to D.C. last June.