

heartland LINK

A publication of East-Central Iowa Rural Electric Cooperative

ANNUAL MEETING OF THE MEMBERS

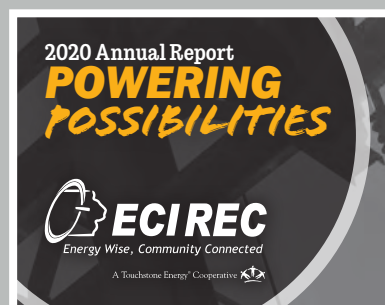
Inside front cover

All the information you need on how to participate in our Cooperative's democratic process.

ANNUAL REPORT

Interior insert

Our 2020 year-end financials and notable accomplishments and stats.



ENERGY EFFICIENCY TIP OF THE MONTH

Inside back cover

MEMBER CHALLENGE QUESTIONS & WINNERS

Inside back cover

SCHOLARSHIP WINNERS

Back cover

Meet the 12 deserving high school seniors who were awarded scholarships this year.

It's Time to Vote!

Inside front cover



A Touchstone Energy® Cooperative

Tune in as we talk about **POWERING POSSIBILITIES**

a Cooperative Difference feature

VIRTUAL ANNUAL MEETING OF THE MEMBERS

Thursday, June 17, 2021

Login time opens: 10:30 a.m.
Business meeting begins: 11:00 a.m.

HOW DO I ATTEND?

Visit www.ecirec.coop and look for the yellow button at the top of the home page, which will take you to the the Annual Meeting of the Members page. Look for a green JOIN NOW button. The virtual meeting room will open at 10:30 a.m.

HOW DO I VOTE?

On May 17, ballots will be mailed and online voting will open. All votes—online and mail-in—MUST be received by June 14.

- 1 MAIL** - A ballot was mailed to every member with a self-addressed and stamped return envelope.*
- 2 SMART HUB** - Log in to SmartHub at <https://ecirec.smarthub.coop> and click VOTE NOW. Please note: SmartHub voting must be done in a web browser, not the SmartHub mobile app.
- 3 ONLINE** - Click the blue VOTE NOW button located on the home page at www.ecirec.coop. Enter your voter number and election passcode, which were listed at the bottom of your mailed ballot. Follow online voting instructions.

*ECI REC partnered with Diamond/OSG to administer the 2021 Annual Meeting mailing and ballot validation processes. They will tabulate all the ballots, both paper and online.

ARE THERE PRIZES?

Of course! Bill credits and two electric leaf blowers will be given away. Attend the virtual meeting for a better chance to win, because one leaf blower is reserved for attendees only!

IT'S TIME TO VOTE! The election for the East-Central Iowa REC Board of Directors will get underway May 17, when voting opens, and continue until June 14. This year's Annual Meeting of the Members will once again be held virtually via Zoom.

In today's challenging environment, cooperative leaders carry a significant responsibility. Over the past year, we've been reminded how incredibly essential our utilities are. ECI REC is blessed to have a Board of Directors that is prepared to not only power through obstacles, but is also excited to find ways to power possibilities.

"Members, your vote does matter! While we will not yet have the opportunity to gather in person and vote, we've extended our voting window this year, and we are offering members three ways to cast their ballots," said CEO Teresa Floyd. "We hope you'll join us for our livestream and take part in guiding our Cooperative's future!"

We've created a page on our website dedicated to the Annual Meeting of the Members. Look for the yellow button at the top of the home page at ecirec.coop.

ECI REC also wants to highlight the efforts of our Nominating Committee, who met virtually this year as they worked to make this election possible. Thank you to: District 1, Robert Hanson; District 2, Peggy Bearbower; District 3, Gerald Selken; District 4, David Inman; District 6, Chuck Mazur; District 8, Randy Merkel; District 9, Dan Sperfslage; and District 10, Carl Dodge.

BOARD DISTRICT #6

Incumbent: Don Shonka
None opposing

Lester (43) Black Hawk County	Fairbank (44) Buchanan County					
Barclay (53) Black Hawk County	Perry (54) Buchanan County	Washington (55) Buchanan County	Byron (56) Buchanan County	Fremont (57) Buchanan County	Coffins Grove (58) Delaware County	
Poyner (62) Black Hawk County	Fox (63) Black Hawk County	Westburg (64) Buchanan County	Sumner (65) Buchanan County	Liberty (66) Buchanan County	Middlefield (67) Buchanan County	Prairie (68) Delaware County
Big Creek (72) Black Hawk County	Spring Creek (73) Black Hawk County	Jefferson (74) Buchanan County	Homer (75) Buchanan County	Cono (76) Buchanan County	Newton (77) Buchanan County	Adams (78) Delaware County
				Grant (138) Linn County		

BOARD DISTRICT #8

Incumbent: Nick Donlea
Opposing: Brad Jesse

BOARD DISTRICT #10

Incumbent: Ryan Kress
Opposing: Tina Dodge



2020 Annual Report

POWERING POSSIBILITIES



A Touchstone Energy® Cooperative 



“Powering Possibilities is such a fitting theme. I continue to witness steadfast commitment from ECI REC’s management team, employees, and directors, and it is second to none. Their dedication to serve the members results in a strong and productive cooperative.”

STEVE KAU, BOARD PRESIDENT



STEVE RAU,
President



TERESA FLOYD,
CEO

2020 President & CEO Message

POWERING POSSIBILITIES

LAST YEAR WAS MARKED not only by its challenges, but also by how we met them. We're proud of the unwavering progress ECI REC made in 2020. We witnessed our employees' grit and commitment to overcoming whatever came their way. At no time was this clearer than in the face of the August 10 derecho that crippled our distribution system, compromising hundreds of poles, several miles of line, and power to 10 substations. We are profoundly thankful everyone returned home safely to their families and humbled by the ECI REC team's loyalty and service to our members.

The path forward was not straight in 2020. As we all adjusted to new realities brought on by COVID-19, ECI REC strove to help you maintain some sense of normalcy by delivering safe, reliable power. Our employees did all they could to safely serve our members and operate business as usual. This is evident as we wrapped the 2016–2020 Construction Work Plan and returned patronage dividends to our membership. And the list goes on, as you can see in the Highlights on page 4 and the Notable Numbers on pages 6–7.

Like last year, our Annual Meeting of the Members will be held virtually in 2021. It remains important to protect the health of our members and employees. Members will again have the option to cast their ballot online or via mail. There is a longer voting window this year. For more details on voting and attending the June 17 meeting, see the inside cover of the *Heartland Link*.

Because ECI REC is owned by the members we serve, it is important we conduct official business, provide a democratic election for our Board of Directors, and share financial and operational details every year. We thank you for your patience and understanding during this unusual time, and we hope to return to our normal format next year.

We also work to keep our members informed about ECI REC through several channels, including the *Heartland Link*, e-newsletters, Facebook, ecirec.coop, bill inserts, and newspaper ads. An informed and educated membership is in our best interest as a locally owned cooperative.

Financials

STATEMENT OF REVENUE AND EXPENSE

REVENUE	2020	2019
Operating Revenue and Patronage Capital.....	\$21,410,155	\$22,168,411
EXPENSE		
Purchased Power	\$11,973,528	\$12,789,745
Distribution Expenses - Operations	\$2,010,855	\$2,103,732
Distribution Expenses - Maintenance.....	\$598,222	\$576,487
Customer Accounts Expense	\$422,412	\$451,897
Customer Service & Informational Expense	\$367,033	\$370,547
Administrative & General Expense	\$1,326,582	\$1,400,455
Depreciation.....	\$2,443,550	\$2,330,699
Taxes - Property & Other	\$21,428	\$22,156
Interest on Long-Term Debt.....	\$1,343,172	\$1,246,943
Other Deductions & Interest Expense.....	\$50,282	\$53,703
TOTAL EXPENSE.....	\$20,557,064	\$21,346,364
Operating Margins	\$853,091	\$822,046
Non-Operating Margins.....	\$49,307	\$79,950
Generation & Transmission Capital Credits.....	\$1,007,783	\$919,440
Other Capital Credits & Patronage Dividends.....	\$233,798	\$181,754
Total Operating & Non-Operating Margins.....	\$2,143,979	\$2,003,190

BALANCE SHEET

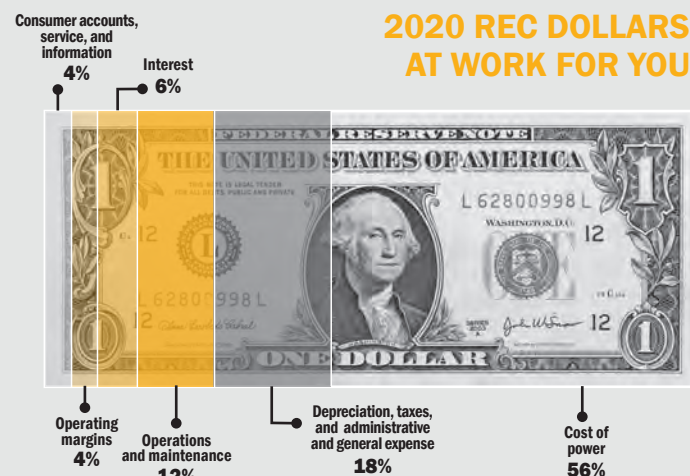
ASSETS.....	2020	2019
Current Assets & Other Debits.....	\$14,984,674	\$16,021,449
Fixed Assets (Net Utility Plant)	\$62,251,036	\$58,583,727
Total Assets & Other Debits	\$77,235,710	\$74,605,176
LIABILITIES		
Total Current & Accrued Liabilities	\$4,275,991	\$4,053,269
Total Fixed Long-Term Debt & Deferred Credits.....	\$35,603,332	\$34,707,310
Total Margins & Equities	\$37,356,387	\$35,844,597
Total Liabilities & Other Credits	\$77,235,710	\$74,605,176

COMPARATIVE OPERATING STATISTICS

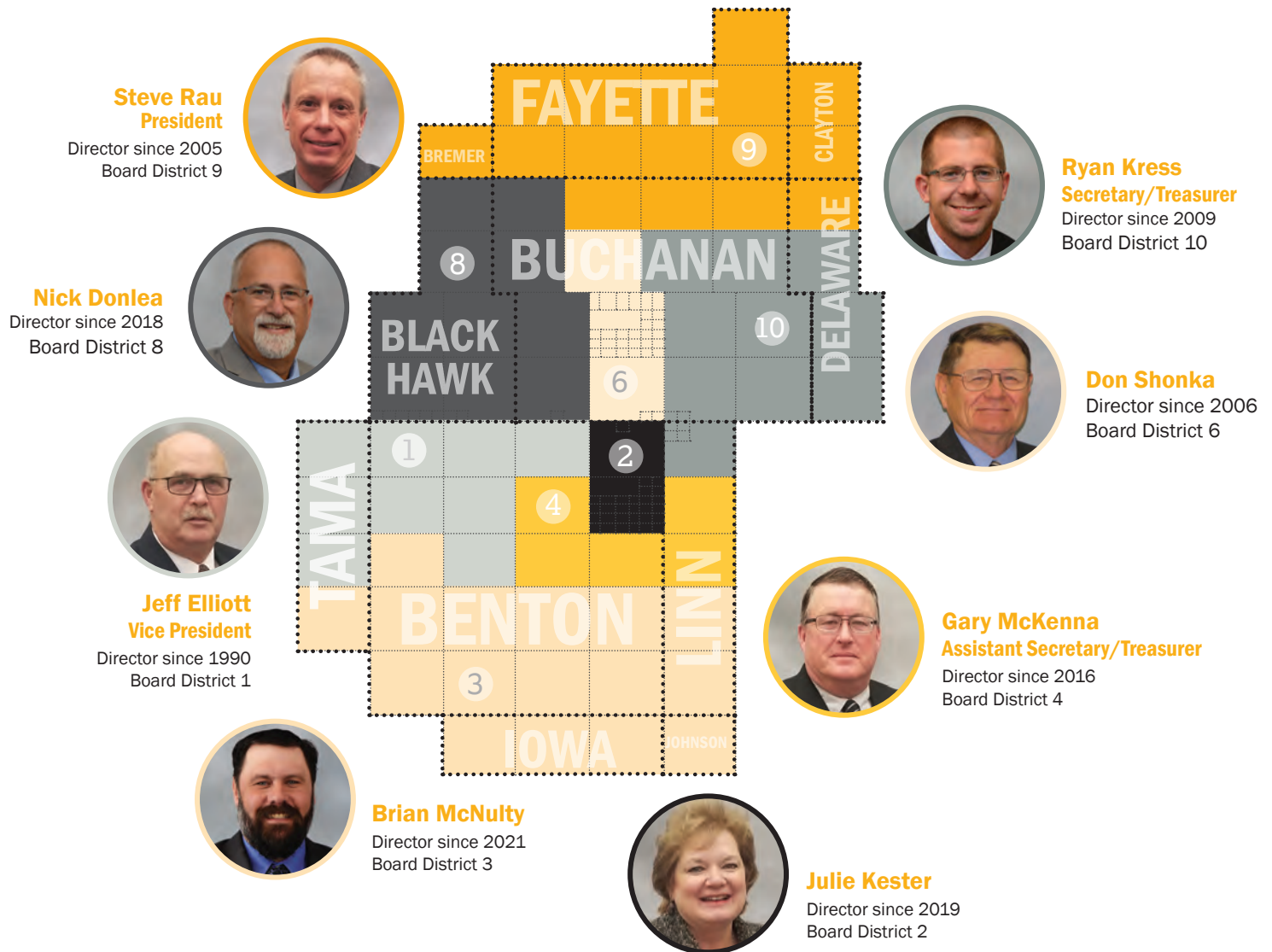
Miles of Line Energized	2,286	2,284
New Services Connected.....	113	131
Total Services in Place.....	9,677	9,664
kWhs Purchased from CIPCO.....	215,455,719	229,847,033
Cost Power Purchased	\$11,957,503	\$12,773,834
Percent Line Loss.....	4.71%	4.68%

OPERATING REVENUE	\$21,385,016	\$22,106,074
Average kWhs Used per Month per Consumer	1,998	2,046
Average Monthly Bill.....	\$198.30	\$206.46
Average Cost per kWh to Consumer	\$0.0993	\$0.1009

LOAN FUNDS		
CFC	\$34,264,811	\$33,294,380
Other.....	\$823,529	\$871,933
Total Loan Funds.....	\$35,088,340	\$34,166,313



Your District Map & Board of Directors



ECI REC IS AMONG IOWA'S
LOWEST
RATES

for cooperative residential electricity.

\$6.50

The average our
members spend per
day on electricity.

7 guided by COOPERATIVE PRINCIPLES

1. Open and Voluntary Membership
2. Democratic Member Control
3. Members' Economic Participation
4. Autonomy and Independence
5. Education, Training, and Information
6. Cooperation Among Cooperatives
7. Concern for Community

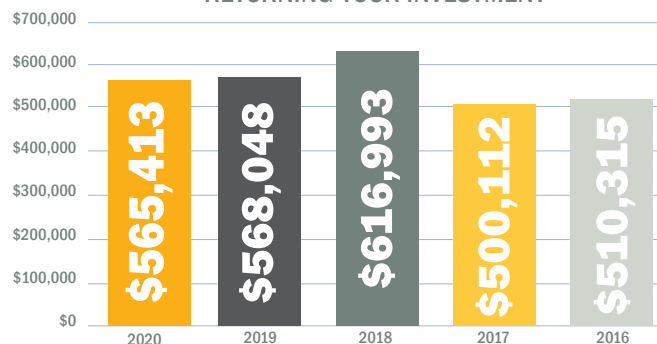
Why is ECI REC a good value?

"The Cooperative informs us how they try to get electricity as economically as they can. When they do well, we get deferred patronage dividends."

- SHARED BY A MEMBER DURING THE JULY 2020 COOPERATIVE DIFFERENCE SURVEY

5-Year Patronage History

RETURNING YOUR INVESTMENT



2020 Highlights

KEEPING THE LIGHTS ON

- » The front lobby at our Urbana Headquarters was remodeled in 2020. The under-used space was transformed into a smaller, more secure lobby/front counter area and an all-employee training and meeting room.
- » In 2020, the world was rocked by the COVID-19 pandemic. At ECI REC, we worked hard to keep the power flowing, while implementing health and safety protocols to protect our team and our members.
- » In May, ECI REC crews upgraded the Sumner substation transformer from a 5 MVA to a 10 MVA. Due to economic growth on the south side of Independence, a larger capacity transformer was needed.
- » On August 10, a derecho with hurricane-level winds ripped across the Midwest. In the ECI REC service territory, the southern district was hit hardest.
 - » At the peak, over 4,000 member-accounts (meters) were without power. ECI REC lost transmission power to 10 of the 12 substations that serve this area.
 - » Power was restored to all accounts that were safe to energize by August 16.
 - » ECI REC's crews continue to rebuild services damaged by the storm.
- » The 2020 outage time per member-account was 848 minutes with the derecho factored in. Without the derecho, the average outage time was 52 minutes per member-account. Over the past four years, the average time was 70.75 minutes per member-account.
- » Between 2019 and 2020, ECI REC replaced 1,391 fuse cutouts, enhancing the reliability of our distribution system.
- » In 2020, 51 miles of distribution line was replaced—34.3 miles of overhead and 16.7 miles of underground line.
- » MJ Electric finished construction of the new Van Horne substation the first week of December. This substation is located along the Highway 30 four-lane project.

COOPERATIVE DIFFERENCE

- » At the May meeting, the ECI REC Board of Directors approved the retirement of \$565,413—100% (\$465,413) of 2005 margins and 11.75% (\$100,000) of 2016 margins—to members of the Cooperative.
- » At the virtual 25th Annual Meeting of the Members, Jeff Elliott (District 1) and Steve Rau (District 9) were re-elected to serve another three-year term on the Board of Directors.
- » Our members participated in the American Customer Satisfaction Index Cooperative Difference Survey. On a scale of 10, ECI REC scored 8.34 as being a “good value for the money spent.”
- » CEO Steve Marlow retired in August 2020. He served our membership for over 39 years, including 7 years as CEO. Teresa Floyd was welcomed as our next CEO. She's been part of the ECI REC team for 28 years, and she served as manager of finance before stepping into the role of CEO.
- » Our redesigned website was launched in September.
- » Longtime Board Director Allen Albers retired after 35 years serving the Cooperative and its members.

LOOKING OUT FOR YOU

- » On December 17, 2019, the House of Representatives passed the RURAL Act. This legislation protects more than 900 electric cooperatives across the nation from losing their tax-exempt status when they accept government grants for disaster relief, broadband service, and other programs that benefit cooperative members.
- » In 2020, ECI REC staff and Board members advocated for a balanced approach in addressing energy issues like increased safety, rural economic development opportunities, service territory laws, and more.

ENERGY WISE

- » In January, ECI REC released the 2020 details for our extensive energy efficiency rebate programs, which target residential, agricultural, and commercial members.
- » Per month in 2020, an average of 77 ECI REC members contributed an average of \$50.00 each to support the production of renewable energy in Iowa. Member support for the year totaled \$3,817.80.
- » ECI REC encouraged members to consider switching from gas-powered tools and appliances to electric. Many consumers are making the switch, because electricity is a cheaper, greener, and smarter way to meet energy needs. This trend is called “beneficial electrification.”

COMMUNITY CONNECTED

- » ECI REC co-sponsored a USDA Rural Economic Development Loan and Grant with the Iowa Area Development Group. A \$480,000 loan was granted to Pihlo and Gingrich Family Dentistry, a new clinic in Dysart. For this project and others, ECI REC was recognized with the IADG Impact Award for community development.
- » ECI REC awarded \$1,000 scholarships to 10 graduating seniors.
- » In 2020, ECI REC gave \$57,225 to 36 causes, including \$20,000 to the Benton County Disaster Recovery Coalition, a nonprofit organization that meets the needs of community members affected by disaster.
- » Sixty-nine members donated \$6,520 to our RECare program, which assists low-income members in paying for heating bills and winterizing their homes.

SAFETY

- » Member Service Technician John Tegler presented demonstrations on electric safety for the fall Progressive Ag Safety Day held at the Benton County Fairgrounds.
- » All ECI REC lineworkers passed their annual pole-top rescue course. The timed exercises ensure each lineworker can safely secure and lower an injured or stranded teammate manually with a rope, clips, and cables, or by lowering the teammate using the truck bucket.

ECI REC Staff



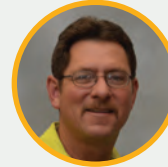
Teresa, 29 years
CEO



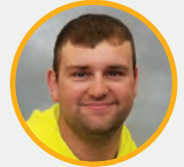
Mike, 23 years
Inventory/Maintenance
Technician



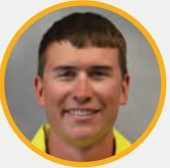
Adam, 21 years
Member Service Manager



Doug, 23 years
SCADA Technician



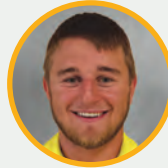
Cole, 5 years
Lineworker



Bryce, 4 years
Lineworker



Holly, 14 years
Member Service
Representative



Braxton, 4 years
Lineworker



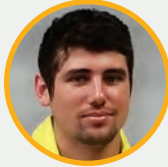
Molly, 20 years
Member Service
Representative



Josh, 3 years
Lineworker



Robert, 9 years
Information Services
Technician



Colton, 3 years
Apprentice Lineworker



Ben, 16 years
Lineworker



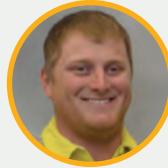
Tanya, 7 months
Member Service
Representative



Lisa, 19 years
Manager of
Communications



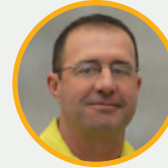
Nathan, 14 years
Information Services
Manager



Jared, 9 years
Lineworker



Dave, 26 years
Engineering Design
Technician



Pat, 31 years
Engineering Design
Technician



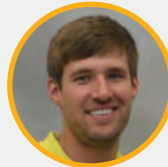
Steve Marlow,
39 years (retired)



Scott, 7 years
Engineering Technician



Robin, 10 years
Cost Accounting Clerk



Dane, 7 years
Lineworker



Kelly, 22 years
Member Service
Supervisor



Scott, 9 years
Inventory/Maintenance
Technician



Brian, 22 years
Line Foreman



Travis, 18 years
Lineworker



Tom, 30 years
Operations Manager



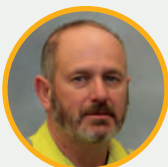
Jennifer, 25 years
Manager of
Finance



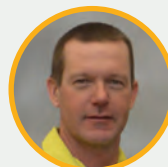
Teresa, 42 years
Operations
Assistant



Katie, 2 years
Human Resource
Director



John, 27 years
Member Service
Technician



Kevin, 25 years
Line Foreman



Colton, 3 years
Apprentice Lineworker

2020 Notable Numbers

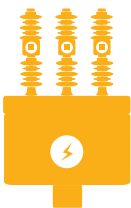
Average cost per kWh



6.05%
DECREASE
over the past
10 YEARS

25 Substations

ECI REC owns and maintains 25 substations, all with advanced communication technology.



2020 Kilowatt-Hour Sales

0.15%



greater than budgeted

less than 2019 sales



-7.60%

Empowering Energy Savings

\$203,347

in energy efficiency rebates to ECI REC members

\$12,417
agricultural rebates



\$178,293
residential rebates

\$5,578
commercial rebates



879,218 kWh

energy saved by ECI REC members through energy efficiency rebates



INVESTED IN EFFICIENCY

0.933%
(\$0.0010 per kWh)

of 2020 revenue invested in energy efficiency programs

15 YEARS of being a Touchstone Energy Cooperative

A Touchstone Energy® Cooperative

The power of human connections®



315

AVERAGE MONTHLY MOBILE PAYMENTS



2,500+
REGISTERED SMART HUB USERS



935

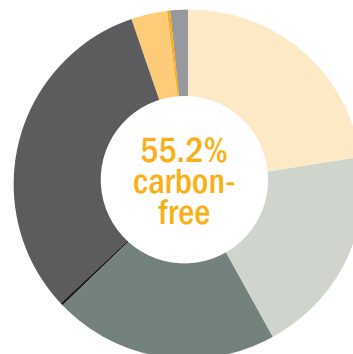
AVERAGE MONTHLY ONLINE PAYMENTS



423
24/7 PAY-BY-PHONE PAYMENTS

Members Support Renewable Energy Production in Iowa

77 members > \$3.93 per month



CIPCO A BALANCED ENERGY PORTFOLIO

- 22.7% Net Interchange¹
- 19.5% Nuclear
- 20.6% Coal
- 0.4% Natural Gas
- 31.7% Wind²
- 3.2% Hydro² & Landfill Gas²
- 0.4% Solar²
- 1.5% Other Purchases¹

Represents 2,983 GWh 2020 CIPCO data

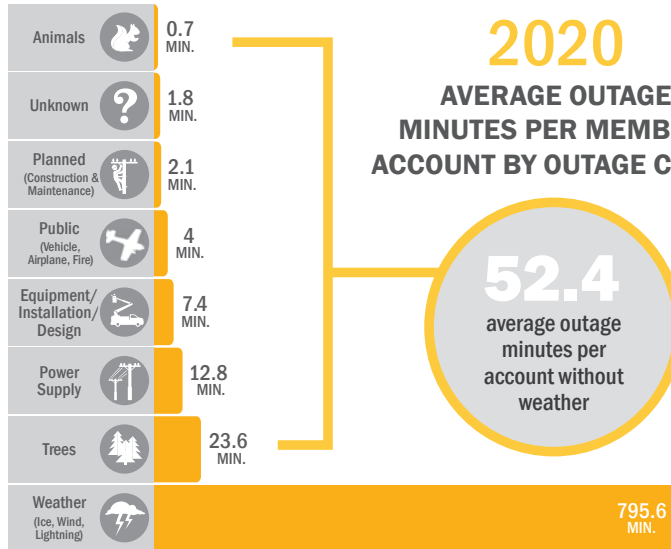
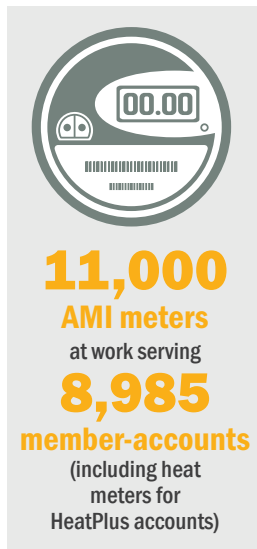
1. CIPCO's purchase power agreement for Wapello Solar, LLC, locks in stable, long-term pricing and avoids the risks associated with rising fuel costs. Renewable energy credits (RECs) are not included in this agreement.
2. CIPCO invests in the development of renewable energy projects in several ways. We operate six small-scale solar arrays near communities we serve and retain the renewable energy credits associated with each. We also contract with energy producers for the electricity output from wind, hydro, and methane gas from a landfill (converted into electricity). CIPCO cannot claim these resources as renewable within our supply portfolio, as we have either sold to third parties or do not receive the renewable attributes associated with the electricity produced from these renewable power sources. By selling these attributes (RECs), we not only support other organizations in meeting their renewable energy goals, we also generate revenue to help us lower our wholesale power rate to our 12 member-owner distribution cooperatives and 15 municipalities.
3. A percentage of market purchases exists within the portfolio to meet additional supply needs not covered by existing contracts or CIPCO-produced generation. Weather volatility and unplanned operational events at power plants may also impact market purchases.

2019-2020 American Customer Satisfaction Survey RESULTS



On a 100-point scale, ECI REC earned a score of 85. The average for Touchstone Energy Co-ops was 75.

2020 Notable Numbers



Helping Member
Families in Need

69
members gave
\$6,520



**CARE with
RECare**



PULLING THE PLUG

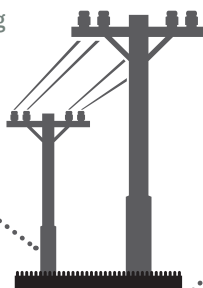
Members earned **\$9,059** for
recycling inefficient working appliances

51 MILES
of overhead and
underground line
replaced

\$2,341,800
invested in line
replacements

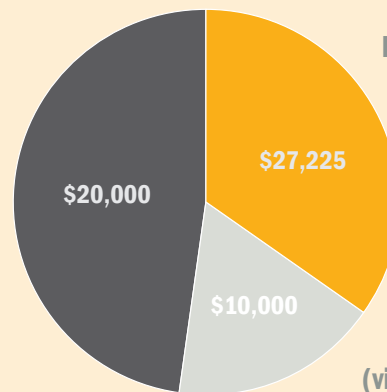
In the Van Horne and Spring
Creek substation areas ...

3,519
poles
inspected



276
underground
facilities
inspected

\$57,225 donated to
36 community organizations



\$20,000 to the
Benton County Disaster
Recovery Coalition

\$27,225
various other
community
causes and
organizations

\$10,000
(via \$1,000 scholarships)
to 10 graduating seniors



OUR MISSION

To demonstrate the
advantages of the
cooperative business model



OUR VISION

To make a difference
in the lives of those we serve



2020
Facebook Fans

204
NEW FANS
TOTAL

136
NEW DURING
DERECHO RECOVERY

661
FANS BY
YEAR-END

MEETING AGENDA

June 17, 2021

10:30 a.m. - Login opens

11:00 a.m. - Business meeting begins

Call to Order

Invocation

Introduction of Directors

Steve Rau, President

**Reading of Affidavit of Mailing of
Notice of Annual Meeting**

Ryan Kress, Secretary/Treasurer

Approval of Agenda

Ryan Kress, Secretary/Treasurer

Minutes of Last Annual Meeting

Ryan Kress, Secretary/Treasurer

Recognition of Former Director Al Albers

Steve Rau, President

Introduction of Attorney

Steve Rau, President

**Reading of the Nominating
Committee Minutes and Election Results**

Julie Pulkrabek, Attorney

Adjournment of Business Meeting

2021 Annual Meeting Prizes

- 12 \$50 bill credits will be randomly selected from members who voted.
- Two electric leaf blowers will be given away as grand prizes this year. One winner will be randomly selected from the group of members who join the virtual meeting, and a second winner will be randomly selected from members who voted. **Ballots need to be submitted by June 14.**
- Prize winners will be announced following the meeting. Winners will receive a notification via email and/or USPS mail.

Phone: 319-443-4343

Toll free: 877-850-4343

Fax: 319-443-4359

Email: ecirec@ecirec.coop

Website: ecirec.coop

**Facebook: [www.facebook.com/
eastcentraliowarec](https://www.facebook.com/eastcentraliowarec)**

7,200 MEMBER-CONSUMERS STRONG

HOW DO I ATTEND THE ANNUAL MEETING?

Please visit our website
at www.ecirec.coop to access
our virtual Annual Meeting
of the Members. The virtual
meeting room will open
at 10:30 a.m.

Calendar Notes

REMINDERS

MONDAY, MAY 31

Closed for
Memorial Day

THURSDAY, JUNE 17

Virtual Annual
Meeting of the
Members

Contact ECI REC

EMAILS

memberservices@
ecirec.coop
(rebates, product sales)

csr@ecirec.coop
(billing, new customers)

WEBSITE
www.ecirec.coop

MANAGEMENT TEAM

Teresa Floyd
Chief Executive Officer
Ext. 450
teresa.floyd
@ecirec.coop

Jennifer Schmitz
Manager of Finance
Ext. 427
jennifer.schmitz
@ecirec.coop

Tom Schmitt
Operations Manager
Ext. 519
tom.schmitt
@ecirec.coop

Adam Albertsen
Member Service
Manager
Ext. 503
adam.albertsen
@ecirec.coop

Lisa Franck
Manager of
Communications
Ext. 472
lisa.franck
@ecirec.coop

Nathan Groom
Information Services
Manager
Ext. 410
nathan.groom
@ecirec.coop

ADDRESS
2400 Bing Miller Lane
PO Box 248
Urbana, IA
52345-0248

PHONE
319-443-4343

TOLL FREE
877-850-4343

FAX 319-443-4359

HOURS

Monday-Friday
Office: 7:30 a.m. to
4:00 p.m.

(closed Saturdays,
Sundays, and holidays)

Energy Efficiency Tip of the Month

Avoid placing items like
lamps and televisions near
your thermostat.

The thermostat senses
heat from these appliances,
which can cause your air
conditioner to run longer
than necessary.

Source: www.energy.gov

take the member challenge

1. COOPERATIVE DIFFERENCE: This year's Annual Meeting of the Members will once again be held _____.

2. COMMUNITY CONNECTED: ECI REC co-sponsored a _____ Rural Economic Development Loan and Grant with the Iowa Area Development Group.

3. KEEPING THE LIGHTS ON: ECI REC owns and maintains _____, all with advanced communication technology.

Find the answers within the stories, features, and content of this newsletter and you could win a prize. Send your answers to memberchallenge@ecirec.coop. Or, print the word(s) at the top of the back page, cut it out, and send it to: ECI REC, PO Box 248, Urbana, IA 52345. You may mail your entry along with your electric bill payment, but remember there is a deadline! Entries for this issue must be received by June 1. Sixteen names will be drawn from all correct entries. Members will not be allowed to win more than once per calendar year.

last issue's challenge winners

The following names were drawn from the March/April 2021 *Heartland Link* entries. These members will receive a \$10 credit on their account.

Harvey Weiss	Nancy McGowan
Mark Crawford	Dennis Andresen
Dorothy Blocker	Jay Montague
Raymond See	Bruce Hammond
Tony Schwarting	Virginia Mitchell
William Venneman III	Larry Haars
Peter Kalb	Pat Jorgensen
John Frese Revocable Trust	Nan Jennings

Stay connected! We post operations news and outage updates at facebook.com/eastcentraliowarec.



YOUR BOARD

Board District 1 - Jeff Elliott
(2020/2021 Vice President)

Board District 2 - Julie Kester

Board District 3 - Brian McNulty

Board District 4 - Gary McKenna
(2020/2021 Asst. Secretary/Treasurer)

Board District 6 - Don Shonka

Board District 8 - Nick Donlea

Board District 9 - Steve Rau
(2020/2021 President)

Board District 10 - Ryan Kress
(2020/2021 Secretary/Treasurer)

CLASSIFIEDS: Free to members only

FREE: 1987 Fleetwood Pace Arrow 32' Motorhome. Nearly 70k on 454ci motor. Has not run since parked 3-4 years ago. Tires are up and in good shape. Not just junk. Near Oelwein. Ph: 563-379-3096.

FOR SALE: 2014 White Hawk 27' travel trailer, ideal for a couple. Out seven times locally. Slide-out living/dining area. Includes heavy-duty hitch, outside fridge and shower, electric space heater, leveling blocks, awning, outdoor rug, outside lighting, hoses, grills, 2020 TV, and more. \$20,000. Ph: 319-436-2699.

WANTED: Fair to good 18.5-38 tractor tires for 16" rims. 12-step metal stairs. Call/leave message after 5 p.m. Ph: 319-202-6831.

Please email your ad to classifieds@ecirec.coop. Ads for the July/August 2021 *Heartland Link* must be received by June 1, 2021.

East-Central Iowa REC will publish non-commercial advertisements as a service to our members. All ads are free. They may be submitted by any member or employee of East-Central Iowa REC. Ads should contain a phone number, name (if desired), a brief description of items with price if applicable. Each ad is limited to maximum of 50 words; please type or print clearly. Editor reserves the right to edit or reject any ad. No ads will be taken over the telephone—please email, mail, or bring your ad to the office.

heartland LINK

May/June 2021 | Vol. 28 - Issue 03

Heartland Link (USPS No. 313-160) is published bimonthly for \$3.30 per year by East-Central Iowa Rural Electric Cooperative, 2400 Bing Miller Ln., Urbana, IA 52345-0248 with outposts located at 1707 First St. E. Independence, IA 50644 and 1600 West D. St., Vinton, IA 52349. Periodicals class postage paid at Independence, IA, and additional mailing offices.

POSTMASTER: Send address changes to Heartland Link, 2400 Bing Miller Lane, PO Box 248, Urbana, IA 52345.

Phone: 319-443-4343
Ownership: East-Central Iowa Rural Electric Cooperative
Publisher: Teresa Floyd
Editor: Lisa Franck

East-Central Iowa Rural Electric Cooperative is an equal opportunity provider, employer, and lender.

CLIP AND MAIL

See inside back cover for the Member Challenge questions.

Answers: 1. _____ 2. _____ 3. _____

Please note: NO ANSWERS will be taken over the phone.

Find tools for members at www.ecirec.coop



24-Hour Bill Pay With SmartHub
See account information at ecirec.smarthub.coop or download the app.



Outage Center & Map
View current outages via SmartHub or at outages.ecirec.coop:81.



Online Forms
Access rebate, service request, and program sign-up forms.



Call Before You Dig
Notify utilities before you dig at www.iowaonecall.com or call 811.



Co-op Connections®
Get discounts on everyday expenses. Visit www.connections.coop or download the mobile app.



Heartland Link E-Newsletter
Email ecirec@ecirec.coop and ask to receive our newsletter via email.



Iowa Rural Power
Join grassroots advocates for Iowa's electric cooperatives. Visit www.iaruralpower.org.

ECI REC Awards Scholarships to High School Seniors

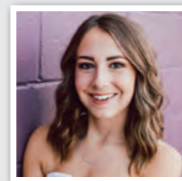
East-Central Iowa REC is proud to announce we have awarded \$1,000 scholarships to 12 graduating seniors who plan to further their education in a diverse range of programs. Congratulations to these deserving students!



Samantha Adams
North Linn
Parents: Michelle and Ted Adams of Walker
KIRKWOOD COMMUNITY COLLEGE, SURGICAL TECH



Amanda Becker
Starmont
Parent: Janet Becker of Dundee
UNIVERSITY OF WISCONSIN-PLATEVILLE, AGRICULTURE EDUCATION/BUSINESS



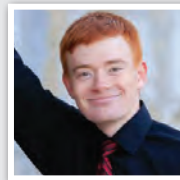
Rachel Clayberg
Jesup
Parents: Kelly and Nate Clayberg of Independence
UNIVERSITY OF NORTHERN IOWA, BUSINESS TEACHING



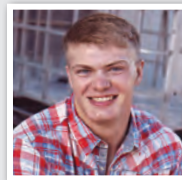
Christina Harrelson
Vinton-Shellsburg
Parents: Tom and Mary Harrelson of Vinton
COE COLLEGE, NURSING



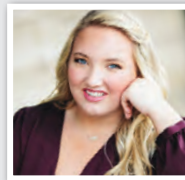
Kaylee Kleitsch
Wapsie Valley Community
Parents: Brenda and Richard Kleitsch of Fairbank
IOWA STATE UNIVERSITY, AGRICULTURE AND SOCIETY



Carter Michels
Dunkerton
Parents: Christopher and Tiffanie Michels of Fairbank
IOWA STATE UNIVERSITY, ENGINEERING



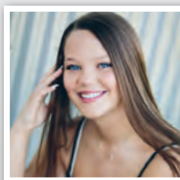
Lukas Recker
East Buchanan Community
Parents: Tim and Kristy Recker of Aurora
UPPER IOWA UNIVERSITY, AGRICULTURAL BUSINESS



Rylee Sash
Union
Parents: MaryJo and Kevin Sash of LaPorte City
IOWA STATE UNIVERSITY, EVENT AND HOSPITALITY MANAGEMENT



Megan Schulte
Benton Community
Parents: Christopher and Kelly Schulte of Norway
UNIVERSITY OF NORTHERN IOWA, COMMUNICATION SCIENCES AND DISORDERS



Jaden Schwarting
Independence
Parents: Tony and Julie Schwarting of Independence
HAWKEYE COMMUNITY COLLEGE, NURSING



Kennedy Vogt
Center Point-Urbana
Parent: Shaun Vogt of Vinton
UNIVERSITY OF NORTHERN IOWA, PSYCHOLOGY



Grace Zaugg
Xavier
Parents: Michelle and Gary Zaugg of Watkins
COLORADO STATE UNIVERSITY, ARCHITECTURAL DESIGN